

# 35years of Expedition Caving

Wookey  
August 2024



Mulu, Borneo, 2003









# China 2001



# Quite foreign











Looks a bit wet





# Da Xiao Dong

D



# Erin & Hong Megui





# Wulong



# Home



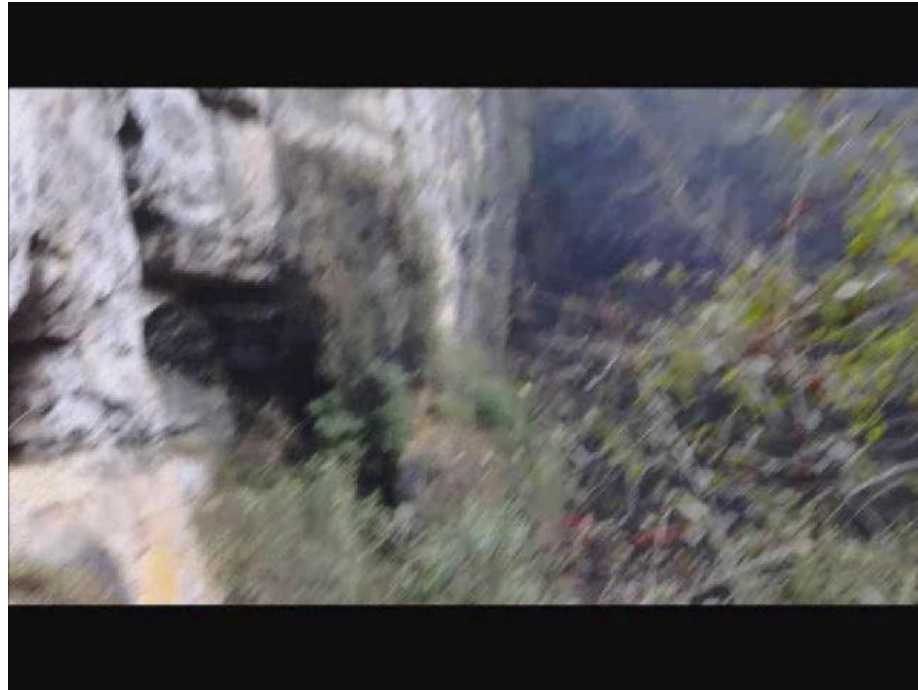








# Niubizi Tiankeng - video

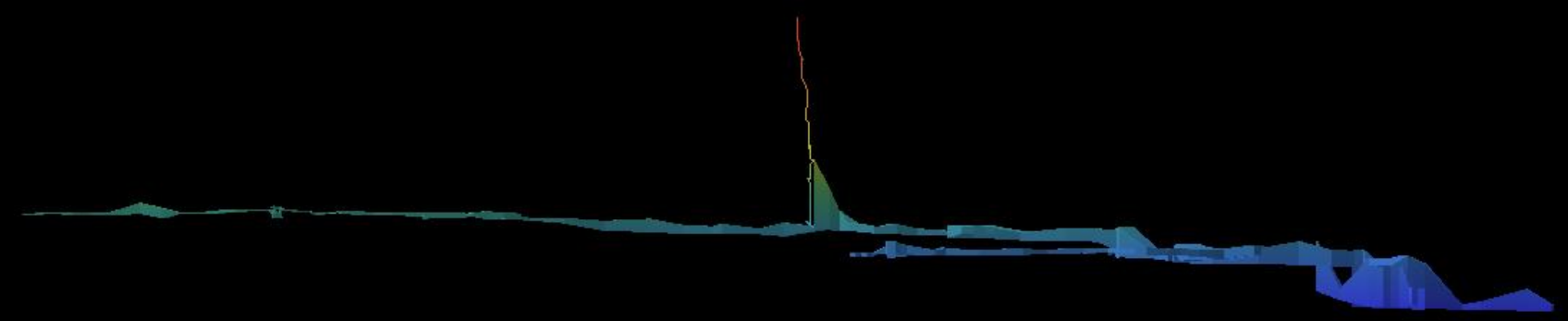
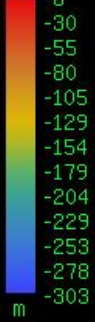


# Lou Shui Kong



200m entrance shaft

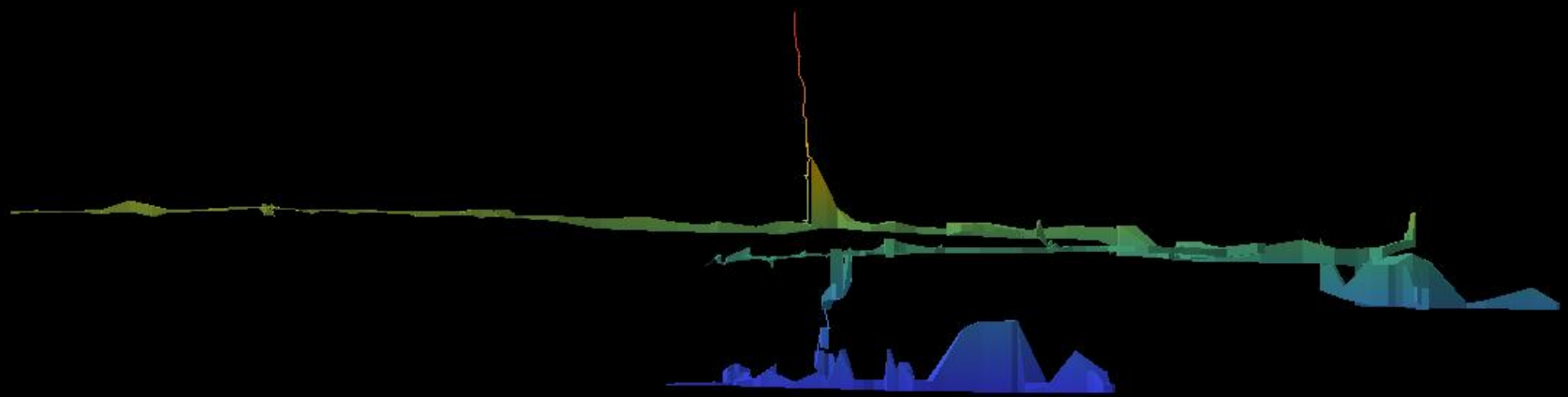
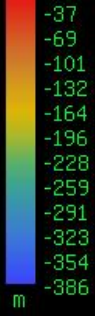




Elevation  
00°

Facing  
122°





Elevation 00° Facing 122°





# Looser Plateau, Totes Gebirge Austria











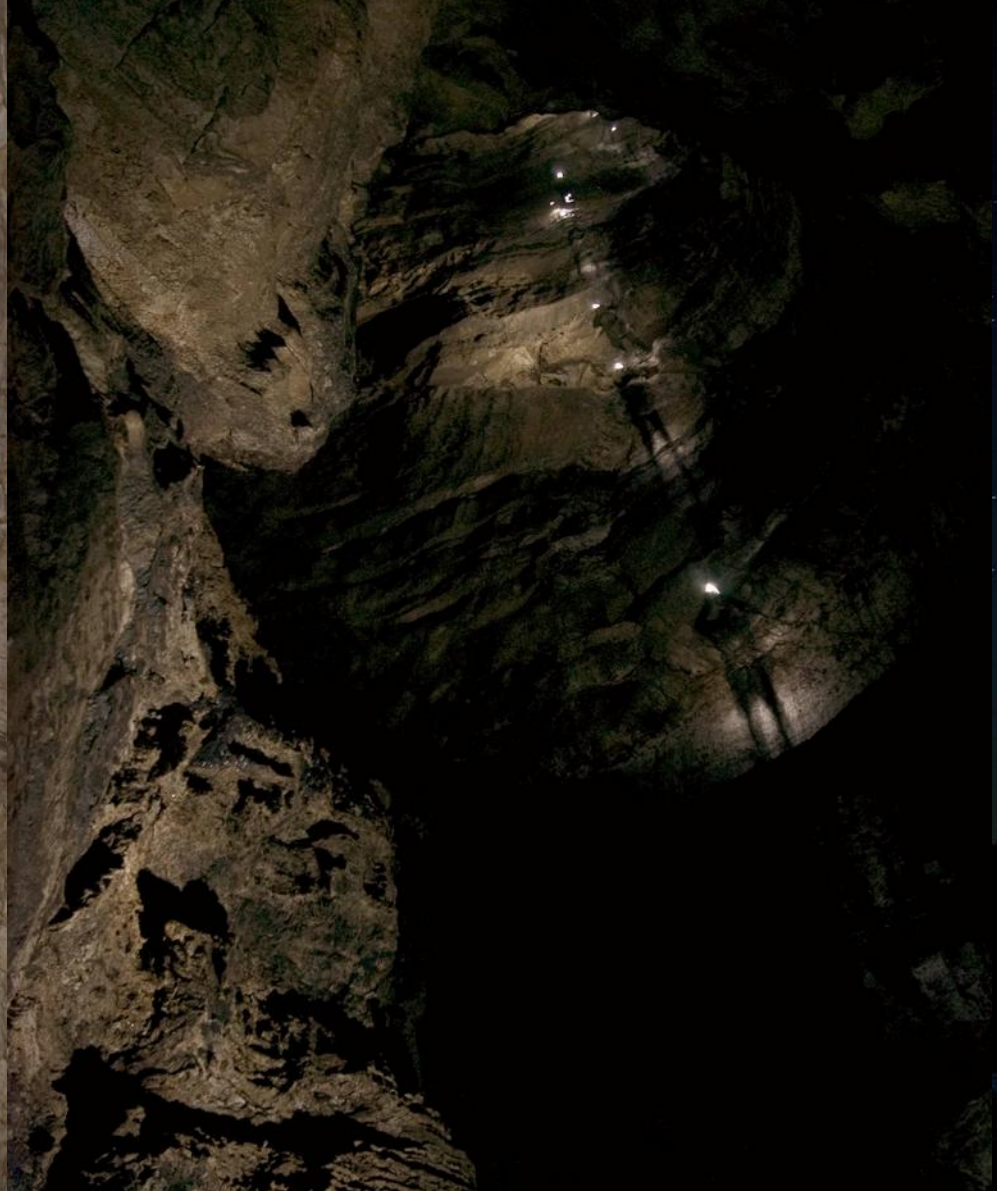








Gaffered to the walls





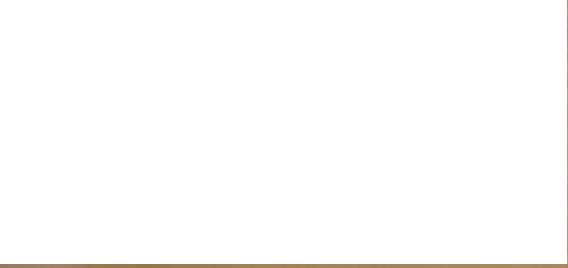
# Tunnockschacht and Eishoehle













**AUSTRIA**

- International boundary
- State boundary
- National capital
- State capital
- Railroad
- Road

0 25 50 Miles  
0 25 50 Kilometers

# Gasthof Staud'n'wirt



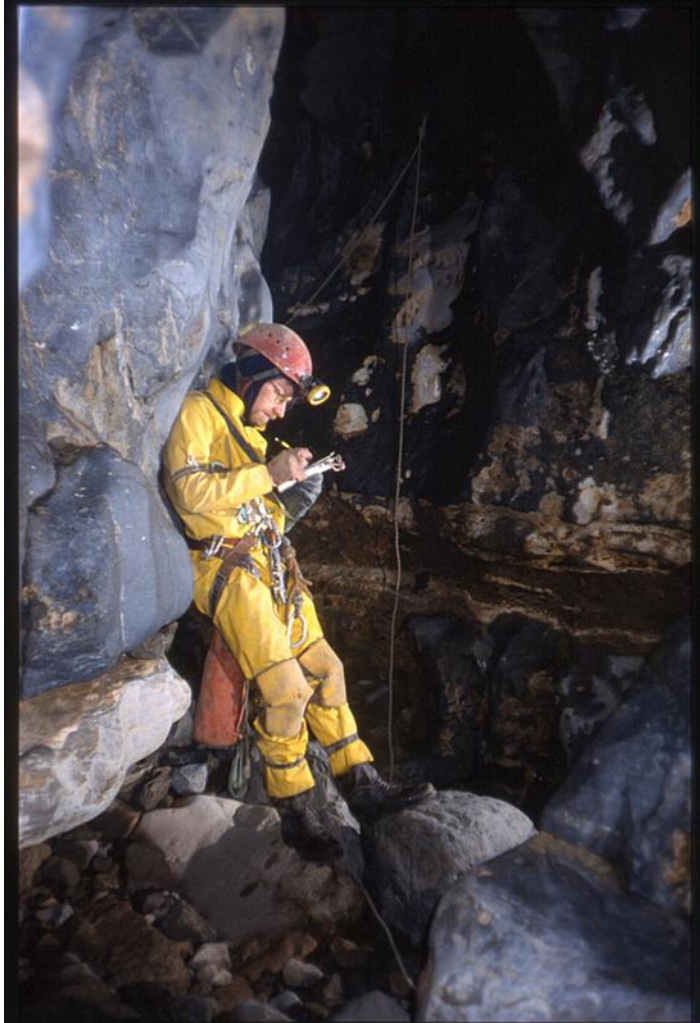
# The Potato Hut



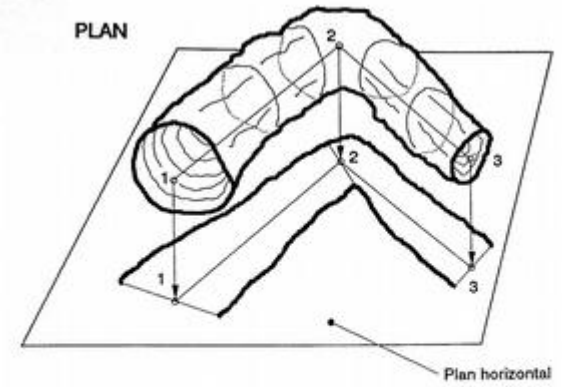
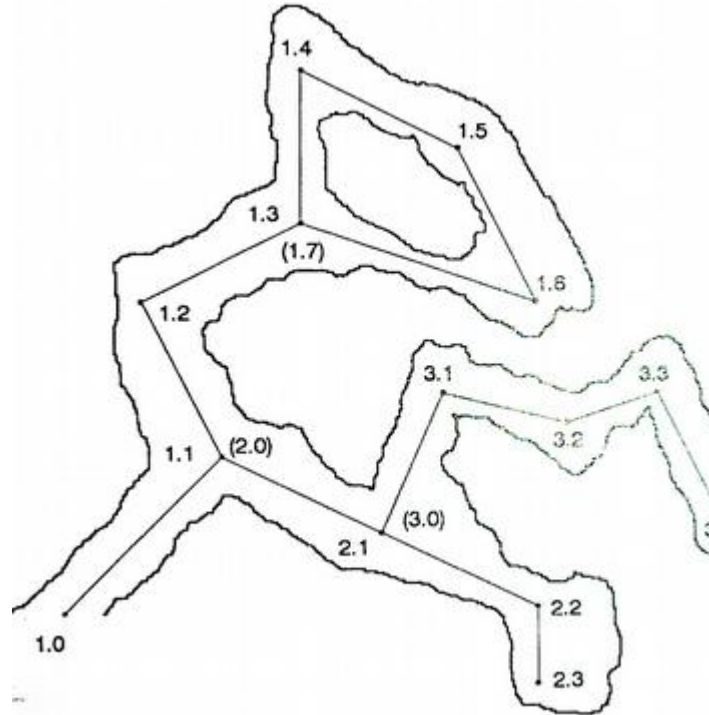


# Top camp – Steinbrucken bivy

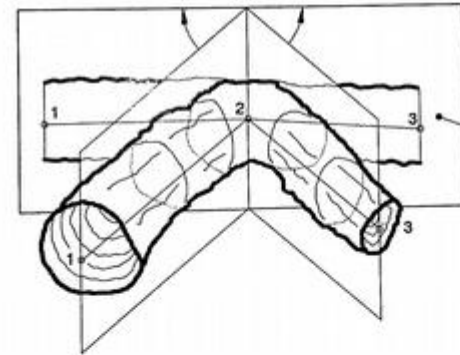




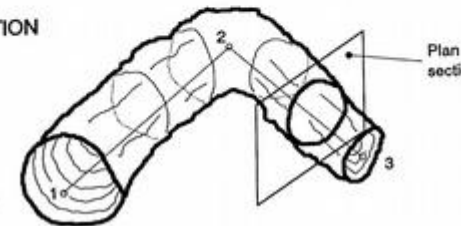
# Surveying

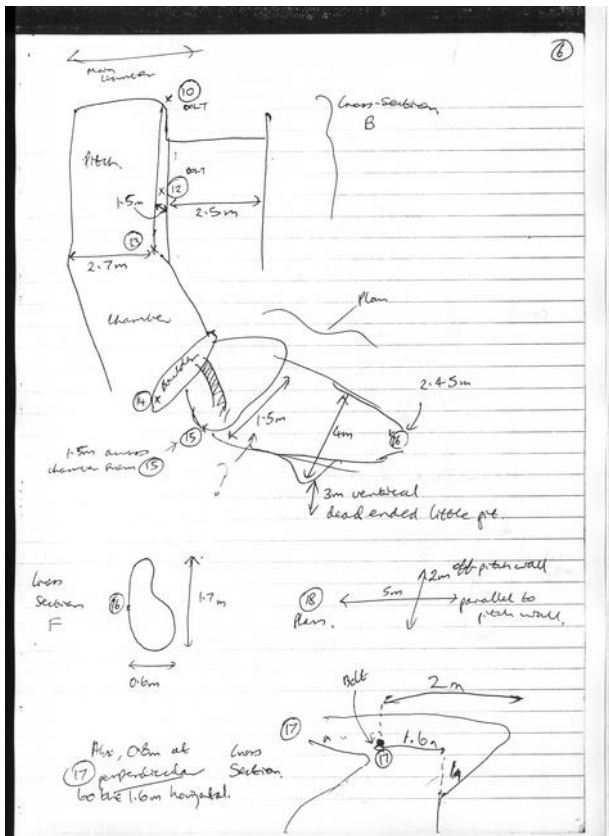


COUPE DEVELOPEE



SECTION





⑩

12/8/89 (Beats Beer → top of Pong 1st, near 11) ✓  
 Top of 4<sup>th</sup> pitch → RH route as far as top of 3<sup>rd</sup> small pitch:

notes: Mark Instruments: Jeremy Tape: Adam  
 Compass: 025078 Clino 736380

From	To	Comp	Clino	Tape	B
2	10	002	+65	4/88	B
2	3	-	-90	6/81	F
3	4	175	-44	5/90	F
5	4	-	+90	8/28	B
6	5	336	-8	2/26	B
6	7	034	-14	5/07	F
8	7	-	+90	4/00	B
8	9	240	+6	2/00	F
10	9	255	+70	4/85	B
10	11	074	-9	1/50	F
12	11	-	+90	2/59	B
12	13	120	+13	1/19	F
14	13	342	-10	2/21	B

1 = burn over 4<sup>th</sup> pitch  
 2 = left bolt of Y-robley (at looking out over pit)  
 3 = plumb to ledge from 2  
 4 = burn near deviation thru narrow hole  
 5 = floor (plumb from 4)  
 6 = burn on wall in chamber (opposite from pitch see sketch)  
 7 = burn on wall at start of rift.  
 8 = floor - plumb from 7  
 9 = burn on rock which overhangs hole (see sketch)  
 10 = ~~small~~ burn on wall of rift  
 11 = burn on wall in rift  
 12 = " " "  
 13 = " " "  
 14 = red blob over squeeze (FIXED STATION)

⑪

1 = 15 on p. 12

STATION	AN	AE	AH	N	E	H
15 = 2	-2.06	-0.07	-4.42	34.46	-36.75	-93.60
15 = 3	0.00	0.00	-6.81	34.46	-36.75	-100.41
15 = 4	-4.23	0.37	-4.1	30.23	-36.38	-104.51
15 = 5	0.00	0.00	-8.28	30.23	-36.38	-112.79
15 = 6	-2.04	0.91	0.31	28.19	-35.47	-112.49
15 = 7	4.08	2.75	-1.23	32.27	-32.72	-113.70
15 = 8	0.00	0.00	-4.00	32.27	-32.72	-117.70
15 = 9	-0.99	-1.72	0.21	31.27	-34.44	-117.49
15 = 10	0.43	1.60	-4.56	31.70	-32.84	-122.05
15 = 11	0.41	1.42	-0.23	32.11	-31.41	-122.28
15 = 12	0.00	0.00	-2.59	32.11	-31.41	-124.87
15 = 13	-0.58	1.00	0.27	31.53	-30.41	-124.60
15 = 14	-2.07	0.67	0.38	29.46	-29.74	-124.22

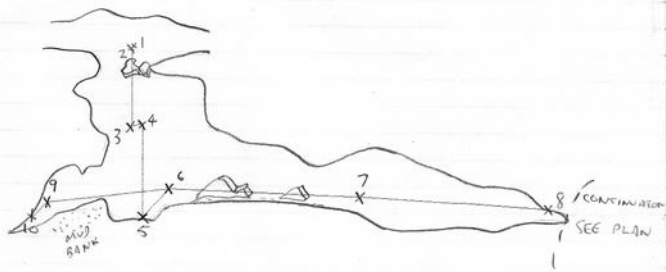
PISS POT (RIFT UNDER HOB MOB PASSAGE)  
24/7/95

Instruments: Andy A  
Writing: Steve B

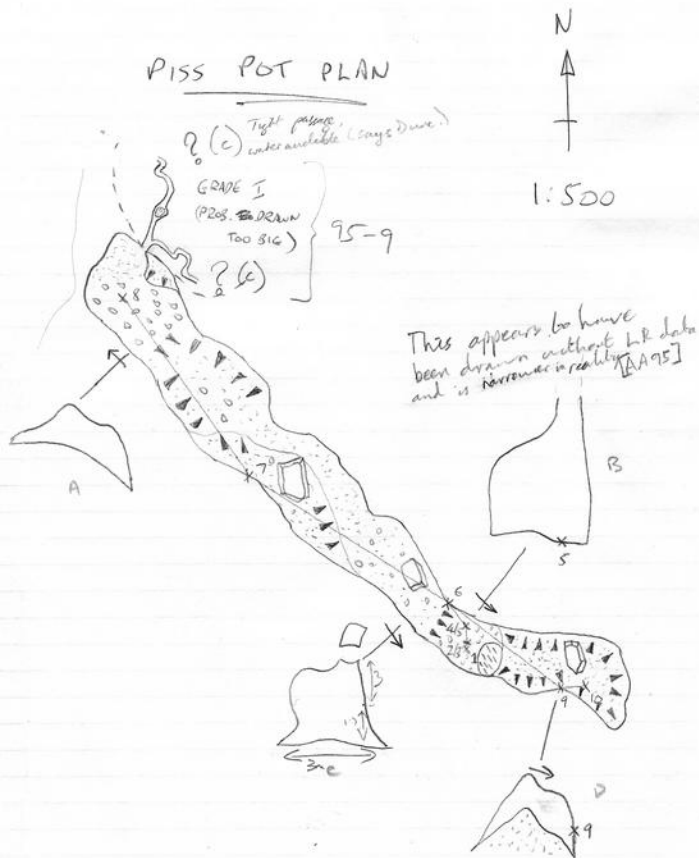
FROM	TO	DIST	CLIMB	COMPASS	STATION	L	R	U	D	TO FLOOR	DESC.
2	3	7/8	DOWN	-	1	0/10	1/0	0/50	0/70		CBM, L.H. WALL
2	1	0/23	0	357	2	0/30	0/80	0/50	0/70		FREE SPACE, PITCH HEAD
4	5	9/16	DOWN	-	3	USEFUL	1/80	0	-	3/50	CBM, N WALL
4	3	1/82	-8	178	4	0	1/80	0	3/50		FREE SPACE, MID PITCH
6	5	4/49	36/5	133/5	5	1/50	2/0	-	0		BLOCK ON FLOOR
6	7	29/59	-1/5	295	6	3/0	0	3/0	1/70		CBM, RH WALL
8	7	24/62	+3	136	7	0	3/0	2/0	1/0		CBM, LH WALL
9	6	17/69	+4	299	8	5/0	1/0	0	0/15		CBX ON CEILING
9	10	3/73	-23/5	86	9	1/80	1/50	0/70	0/180		CBM, RH WALL
					10	3/0	3/0	0	1/160		CBX ON CEILING

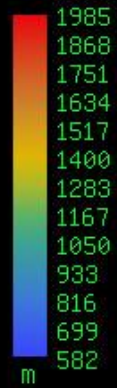
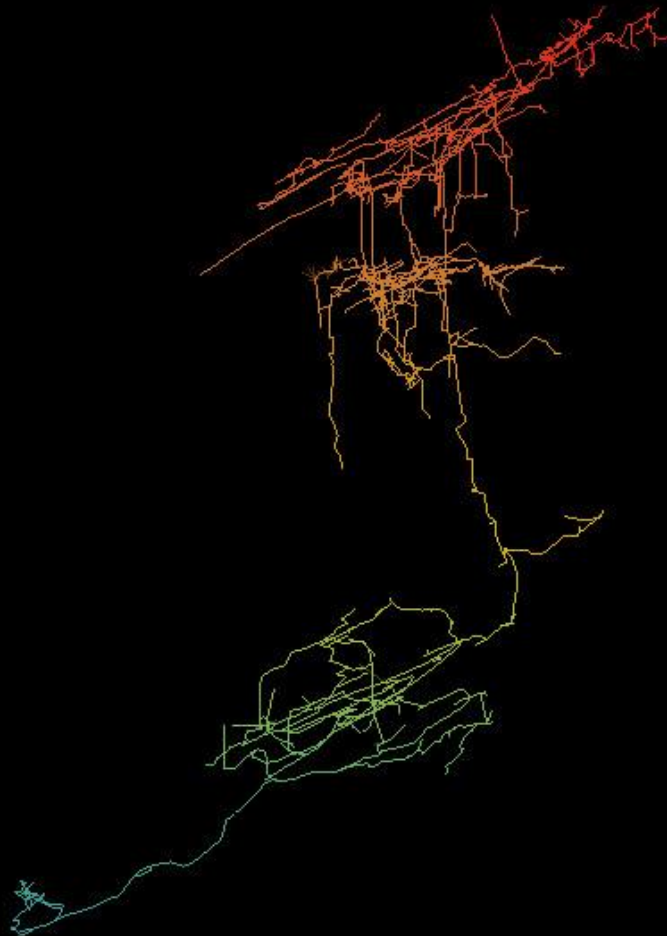
1/160 x  
 1/15 sec  
 2/5 x-sec!

### PISS POT ELEVATION



### PISS POT PLAN





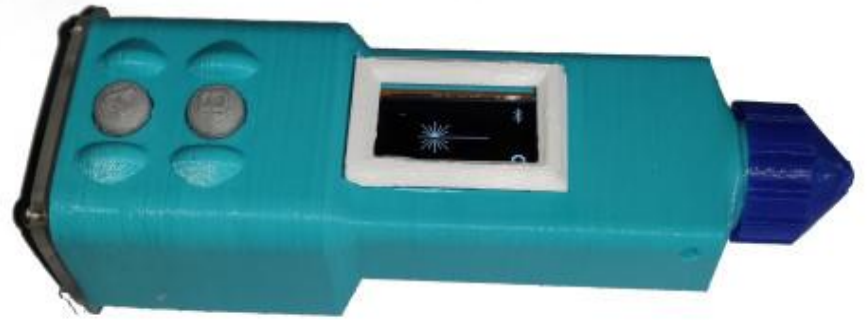
# Survex

## Cave Surveying Group





# Paperless surveying



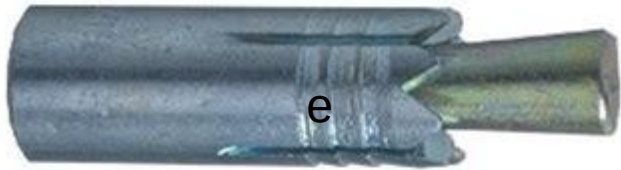






# Anchor evolution

13mm Hand-bolted SPIT  
(1976-2001)



10mm Hilti HKD  
(1991-2020)



8mm Thru-bolt (2016- )





## Legend

### Centreline Data

#### Unconnected Entrances

- Fischt Gesicht Höhle
- Glücklich Schmetterlinger Höhle
- Heimkommen Höhle

#### SMK System

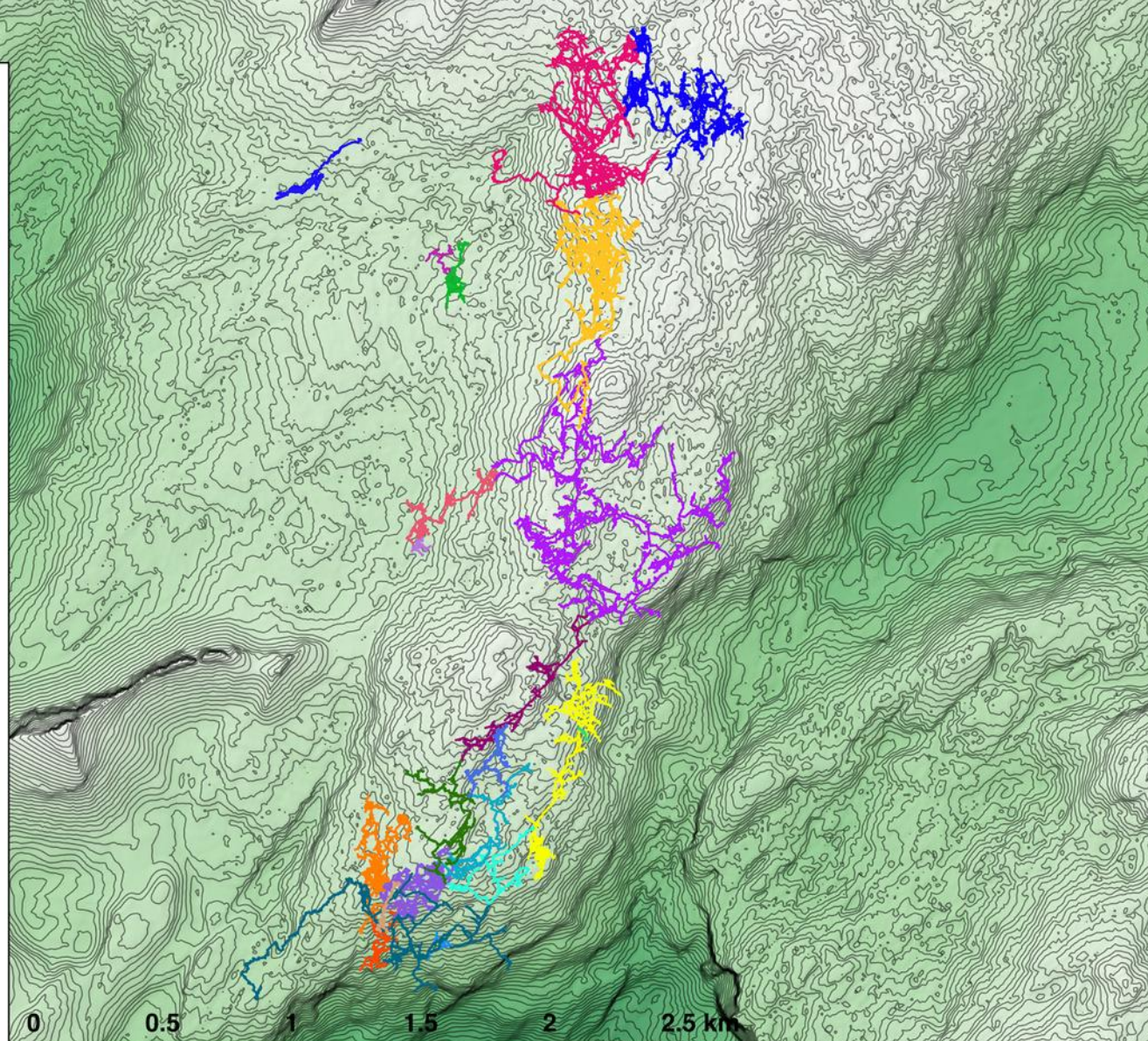
- 264 - Balkonhöhle
- 258 - Tunnockschacht
- 204 - Steinbrückenhöhle
- 161 - Kaninchenhöhle
- 107 - Gemsehöhle
- 83
- 136
- 40 - Eishöhle
- 216
- 158
- 144
- 143
- 78
- 88
- 41 - Stellerweghöhle
- 115
- 142
- 32
- 87

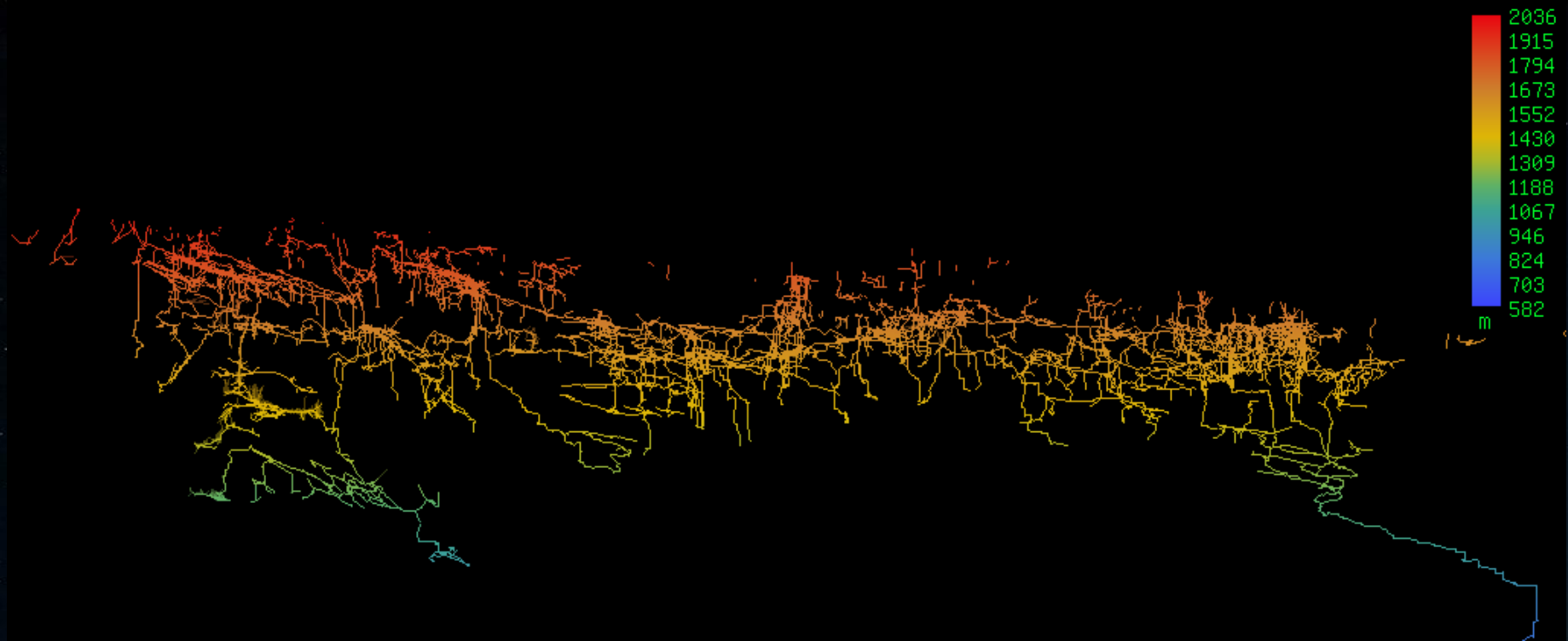
### Terrain

- 10m Contours

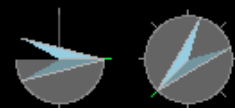
### DTM

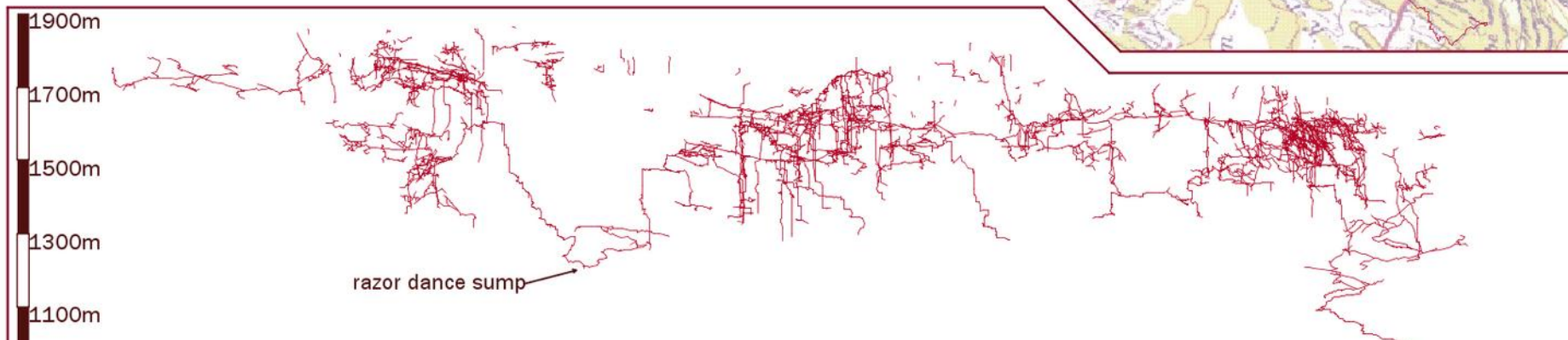
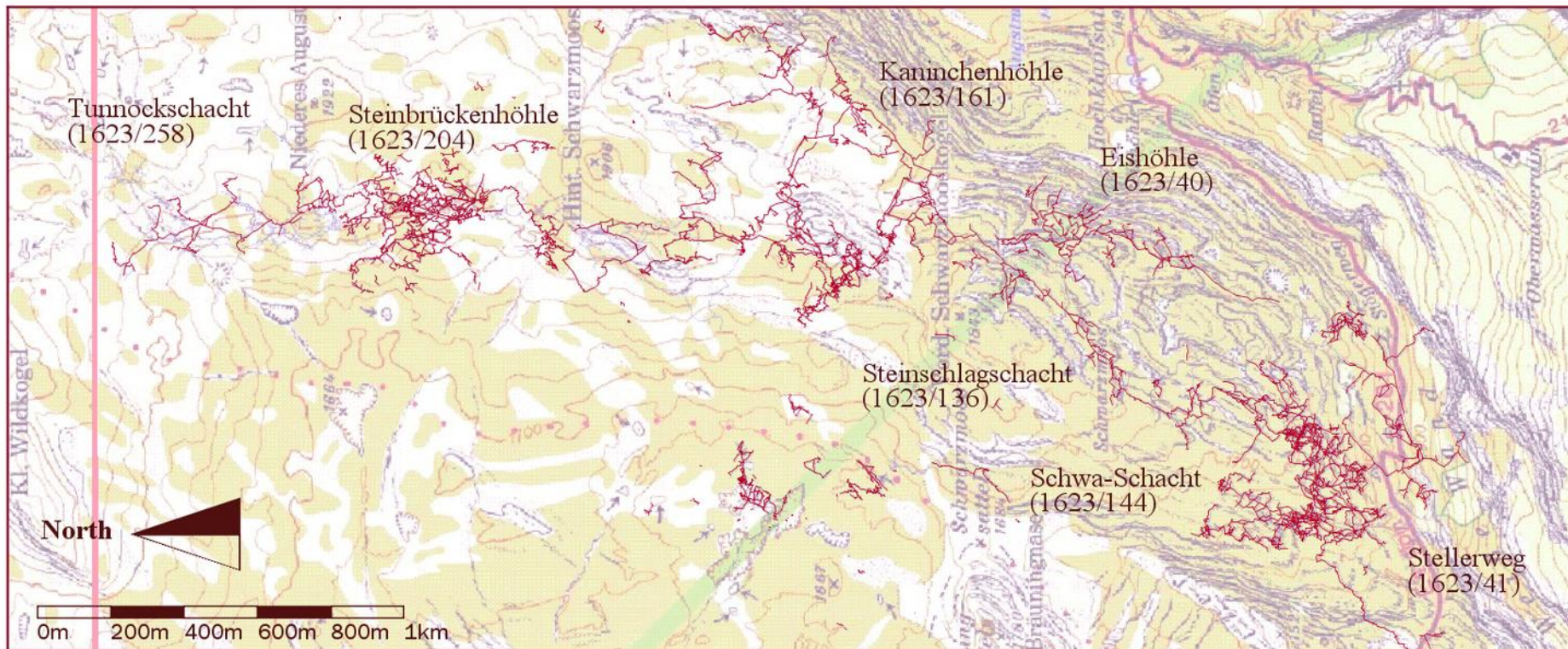
- 942.8





Elevation Facing  
00° 135°





# Razordance





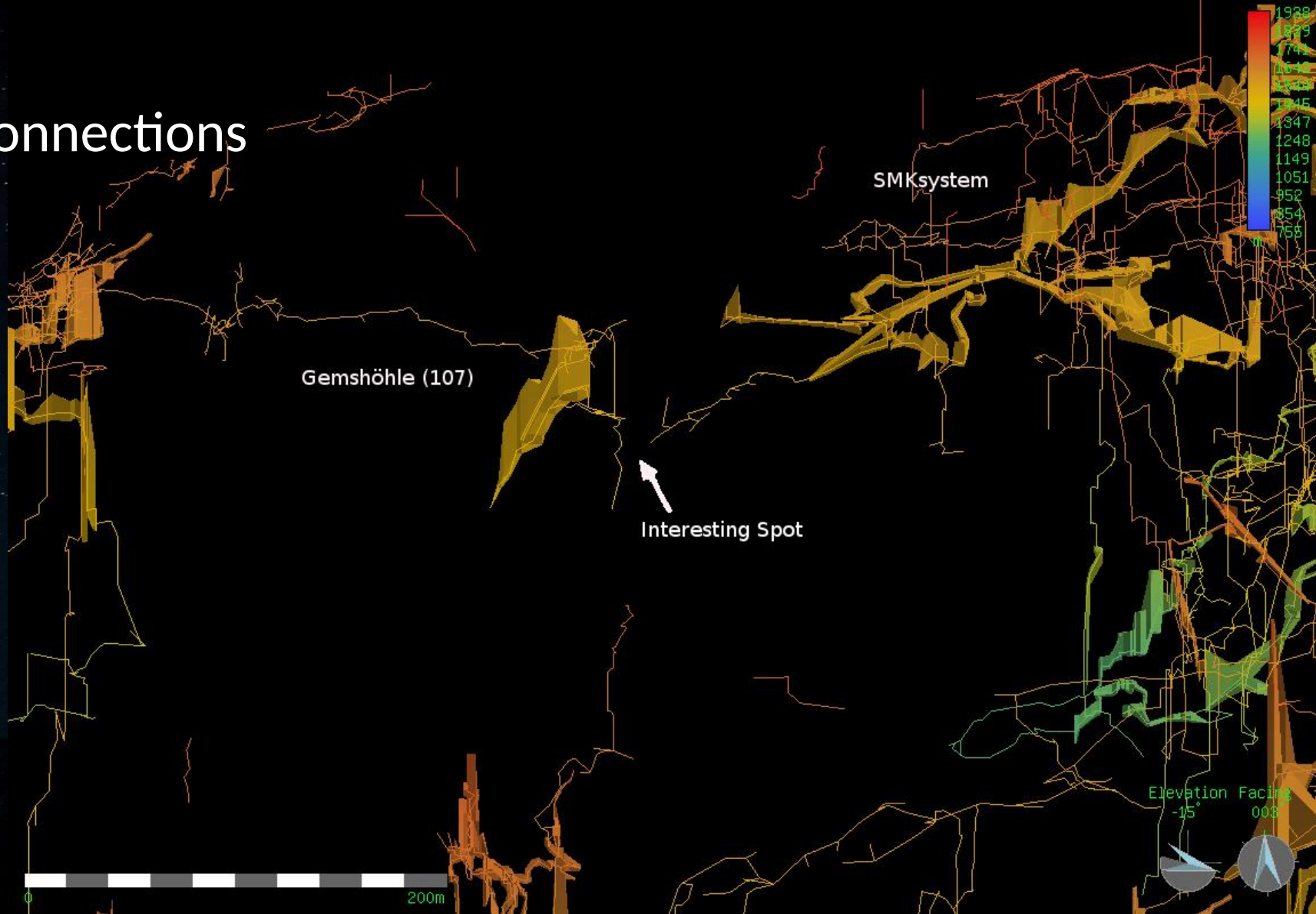


# Tunnockschacht – Camp Kraken





# Connections

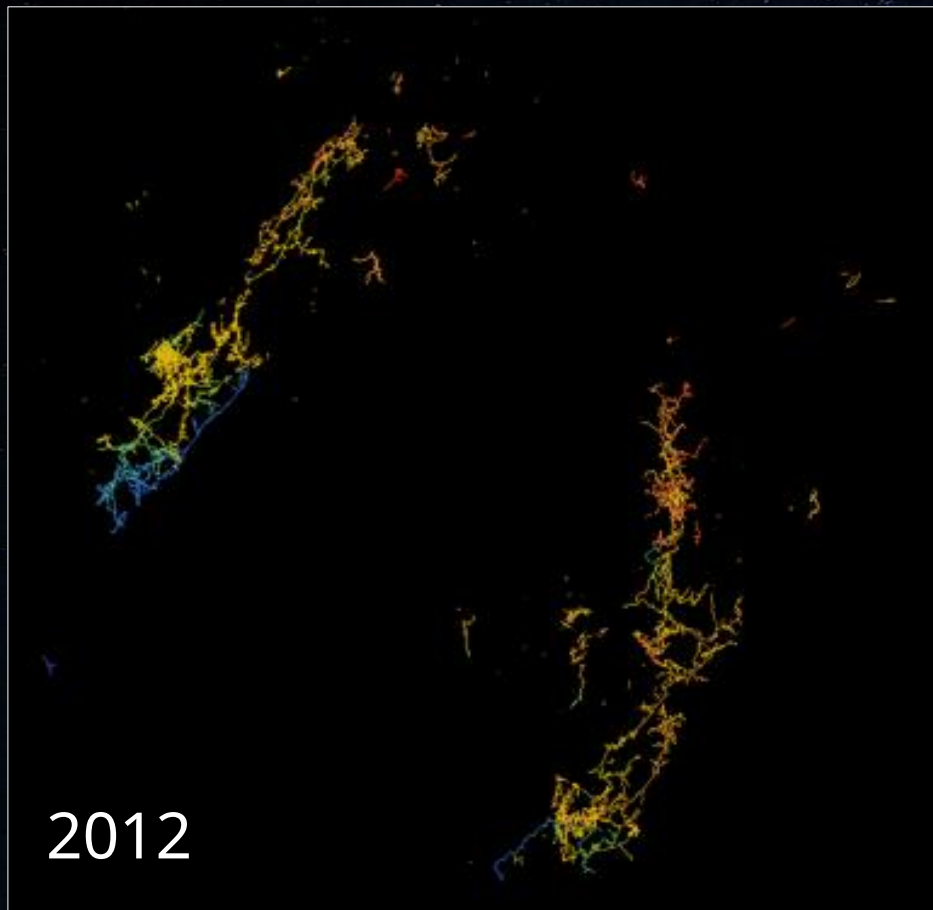




# Connections

- Kaninchenhöhle & Steinschlagschacht to Stellerweg 2002 51km long
- Steinbrückenhöhle to Kaninchenhöhle) 2012 94km long
- Gemshöhle to Kaninchenhöhle 2014 102km long - 'supercave'
- Balkonhöhle to Steinbrückenhöhle 2015 127km long
- Now 139km long (2<sup>nd</sup> in Austria, 17<sup>th</sup> in world)

# Schwarmooskogel and Schönberg systems



0 5 km

