



Cambridge University Caving Club  
Expedition 2018  
*in the Loser Plateau and  
Schwarzmooskogel Hohlsystem*

**Ruairidh Macleod**

*(Not a picture of a cave...)*

## CUCC Expedition 2018

- 6 weeks: 7th July to 18th August
- Training of new expedition cavers and survey software development
- Continued extension and surveying of the Schwarzmooskogelhohle system
- 24 university student members
- 4 main caves focused on for new discovery
- Surface survey and prospecting of new entrances on Loser Plateau

*Mandatory picture of cave... Impressive formations in the new extensions of FischGesicht Hohle*

Photo: Mike Butcher



Photos: George Breley; Becka Lawson

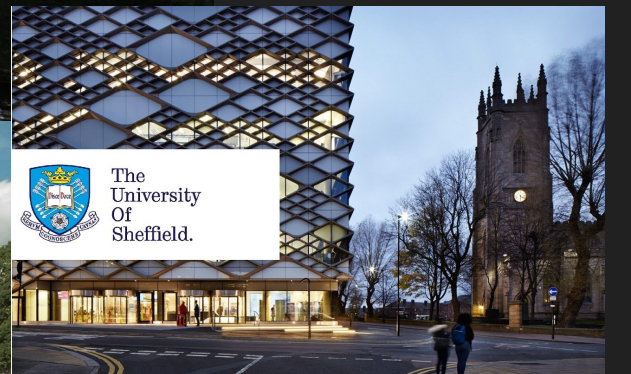




# UNIVERSITY OF CAMBRIDGE

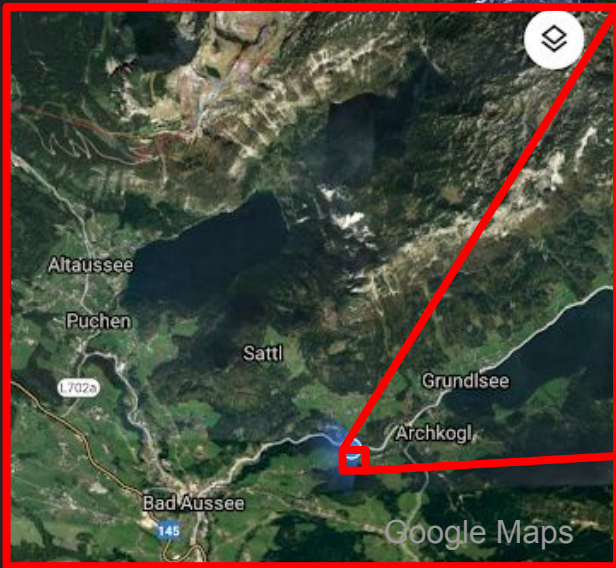


Photo: Wikimedia Commons





Stone Bridge Top Camp Bivvy on the Loser Plateau



Base Camp at Gasthof Staud'nwirt Potato Hut

Photos: Philip Sargent; Becka Lawson

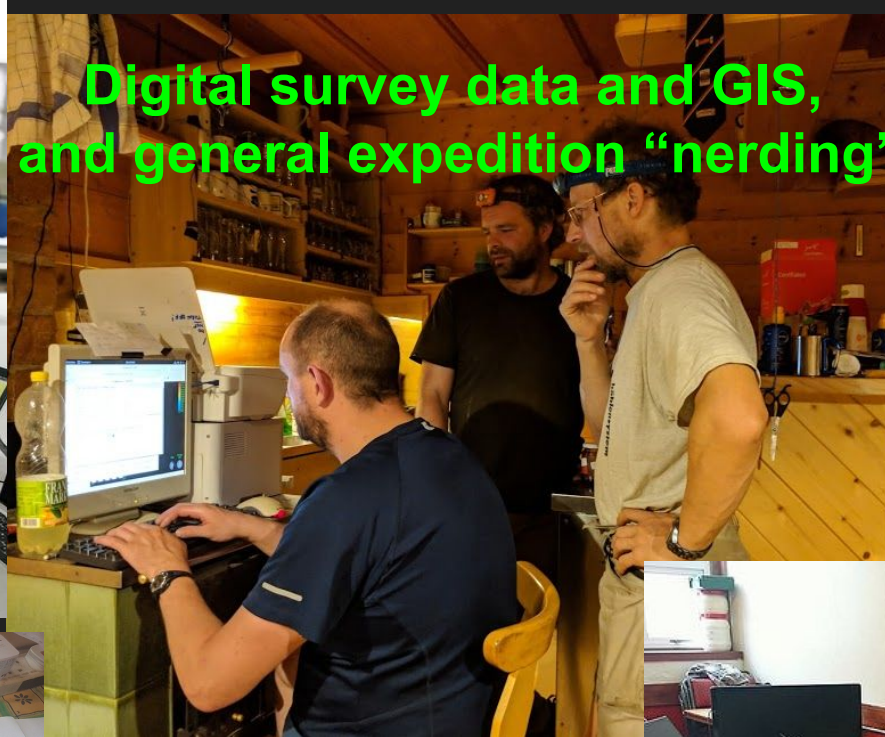
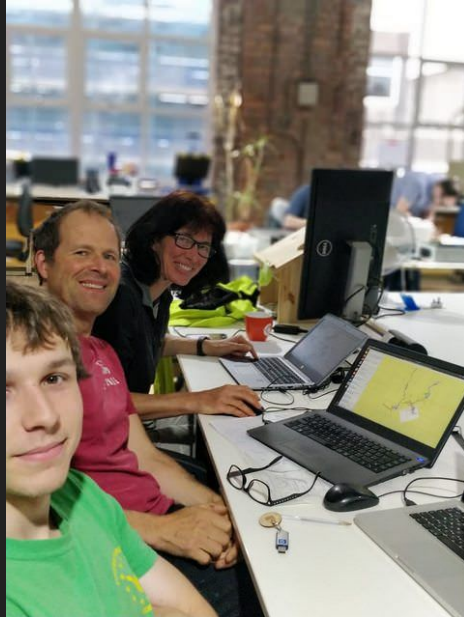
# Electronic innovations for improving the expedition



Photos: Becka Lawson

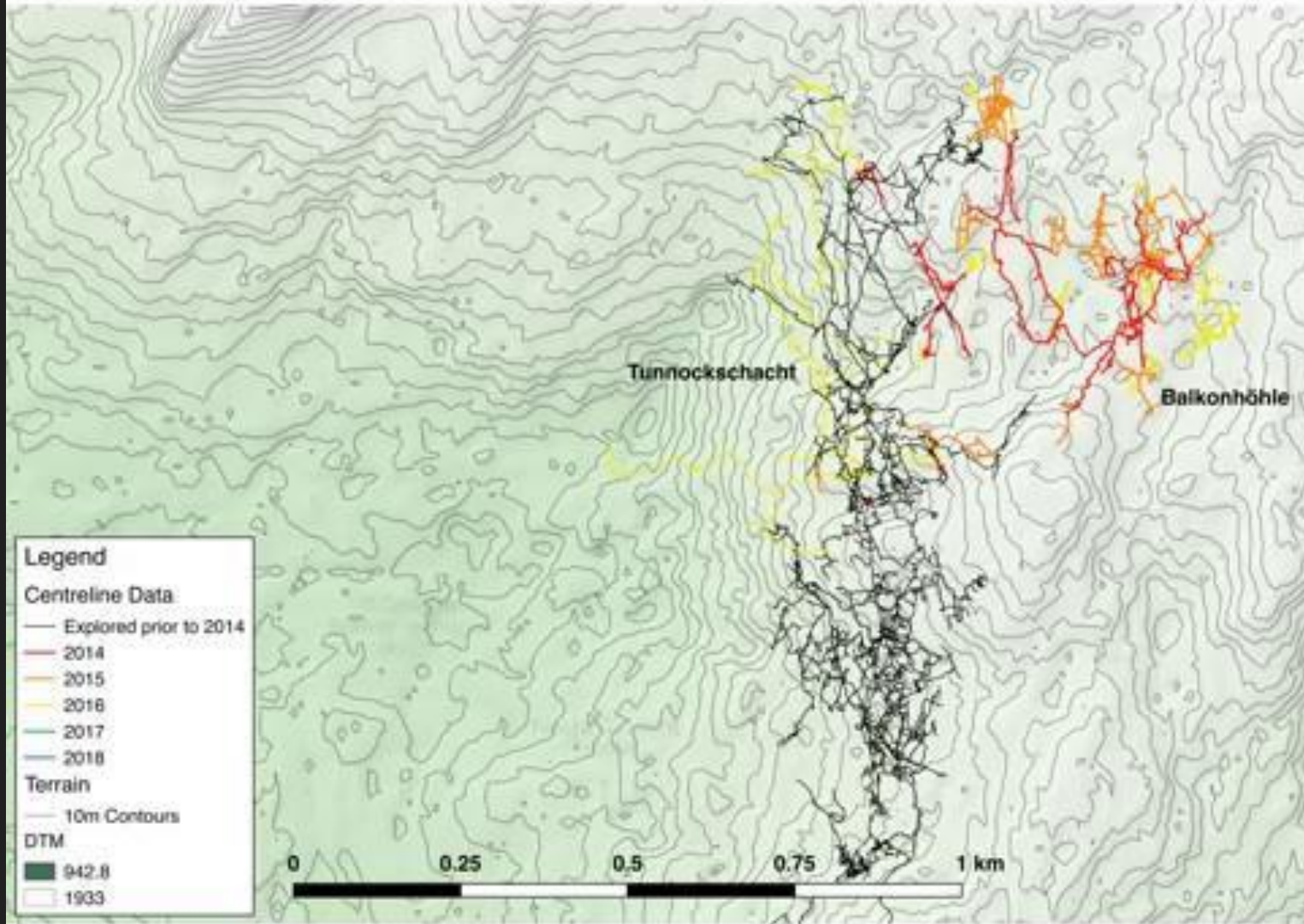


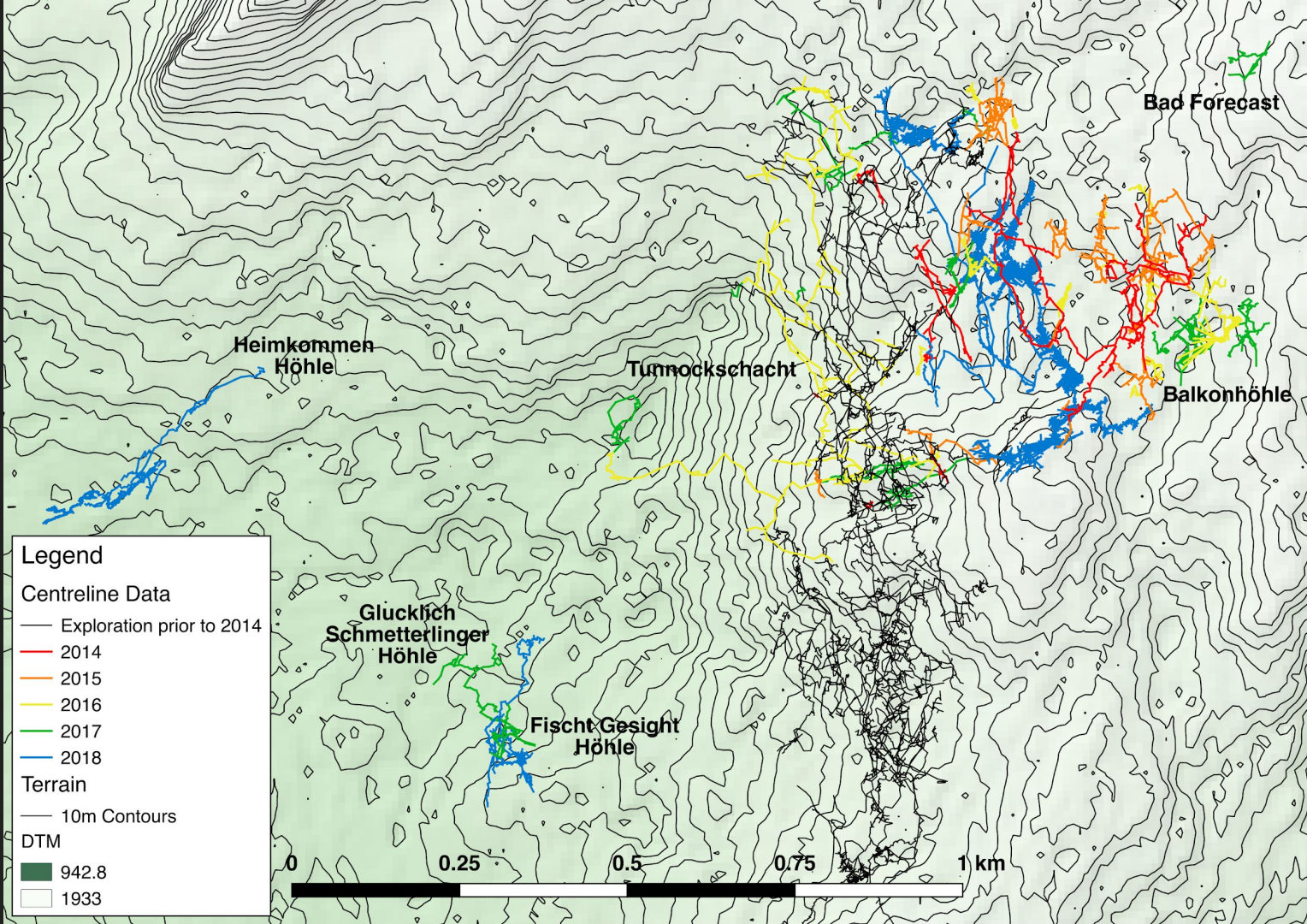
# Digital survey data and GIS, and general expedition “nerding”



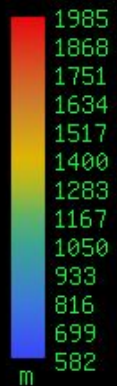
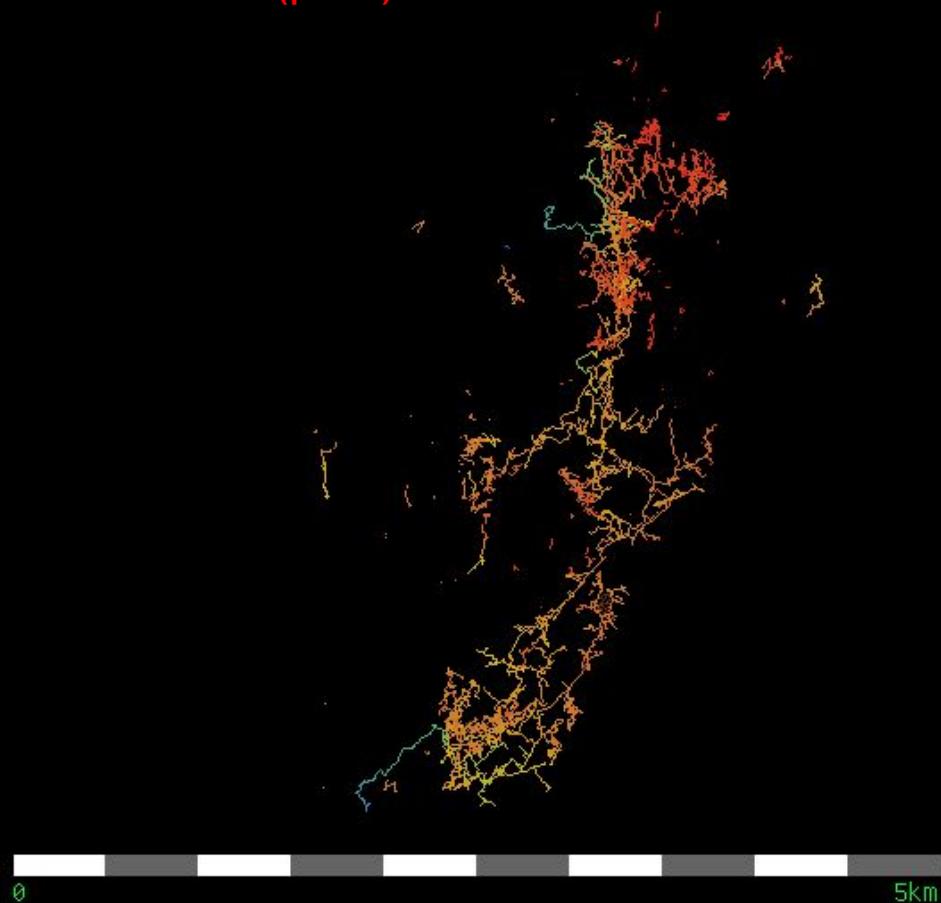
Photos: Rob Watson; Becka Lawson; George Breley.



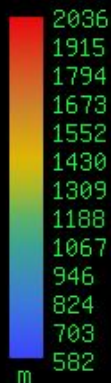
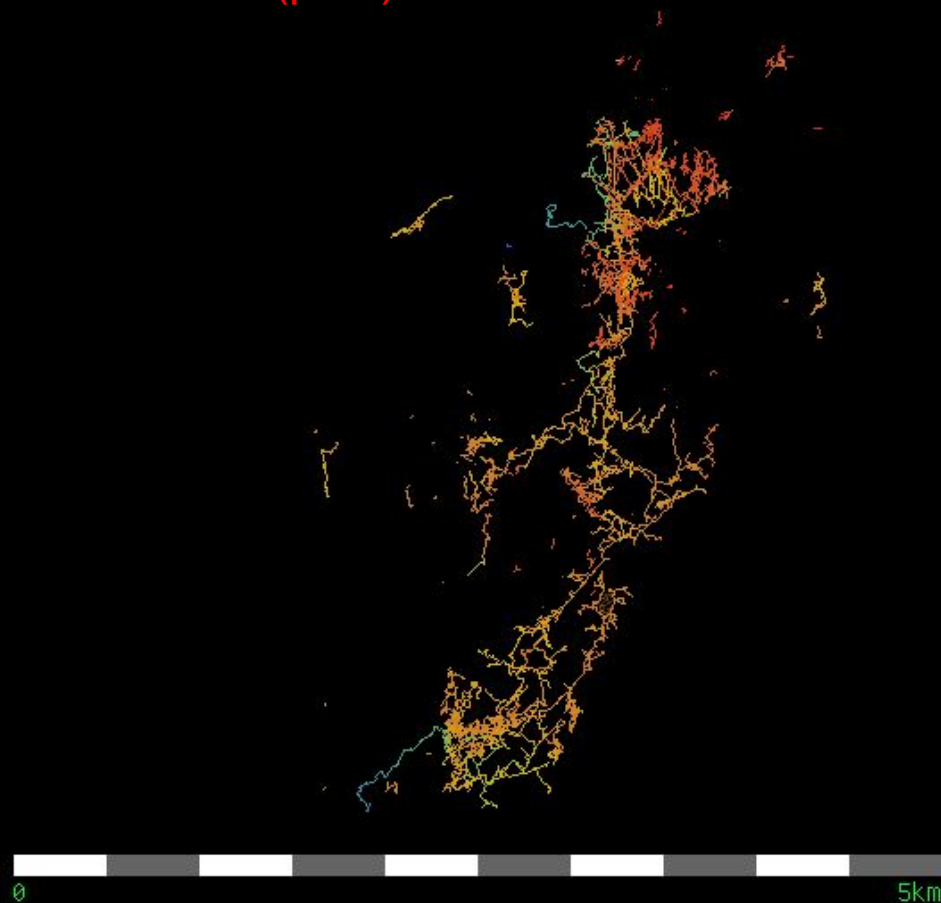




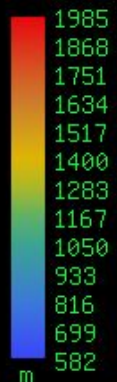
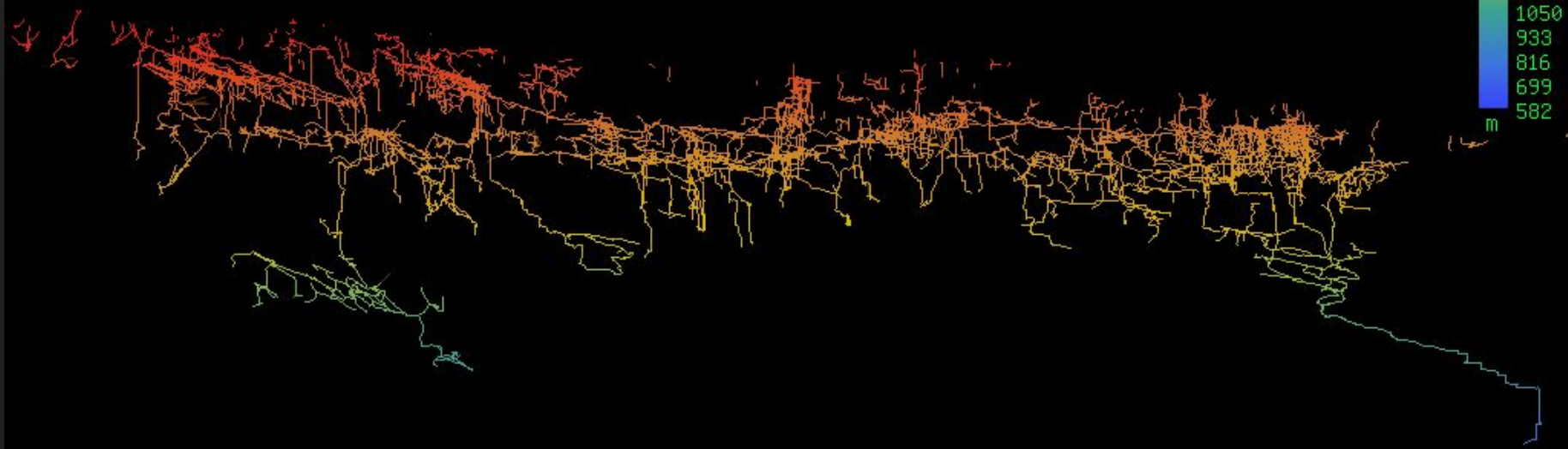
# Extent of discovered cave in 2017 (plan)



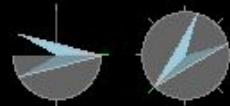
# Extent of discovered cave in 2018 (plan)



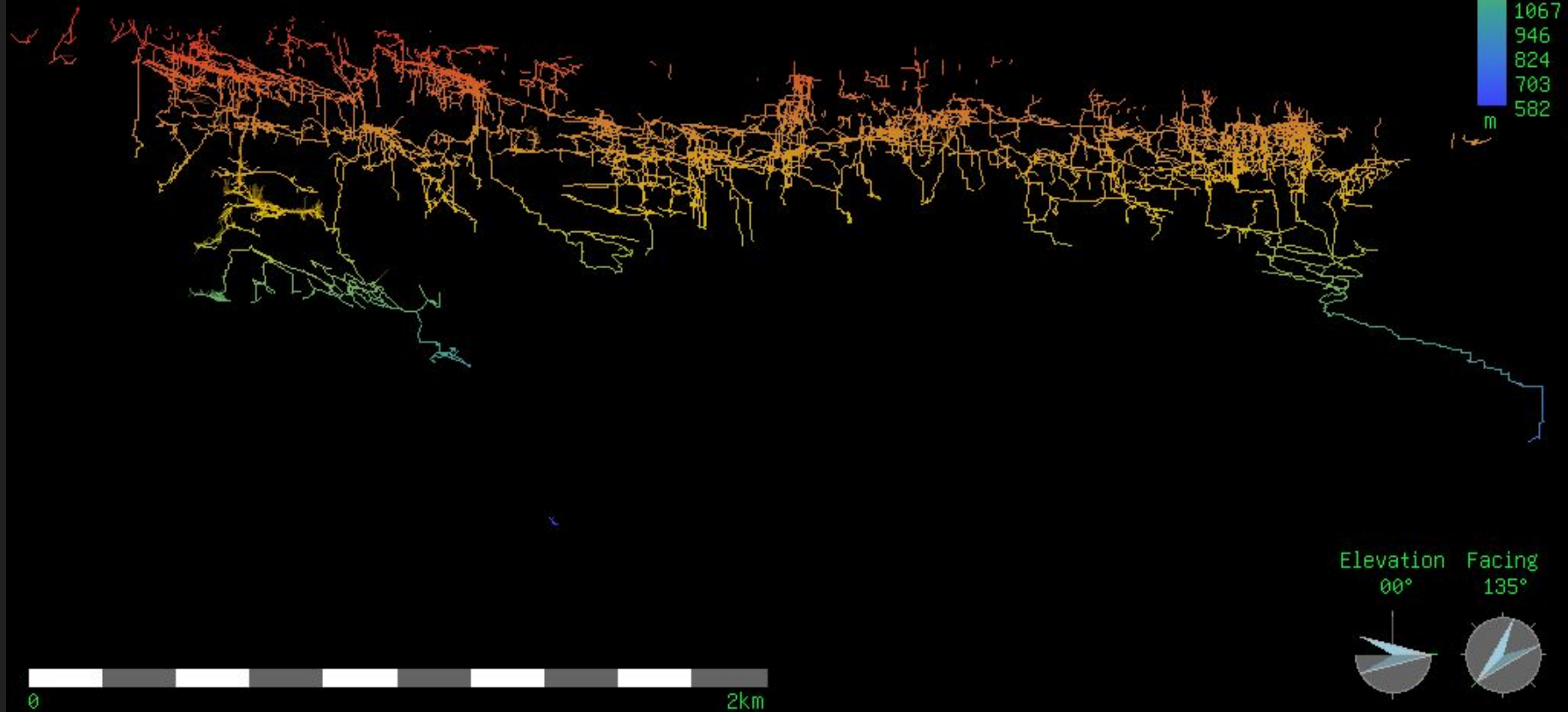
# Extent of discovered cave in 2017 (elevation)



Elevation 00° Facing 135°



# Extent of discovered cave in 2018 (elevation)

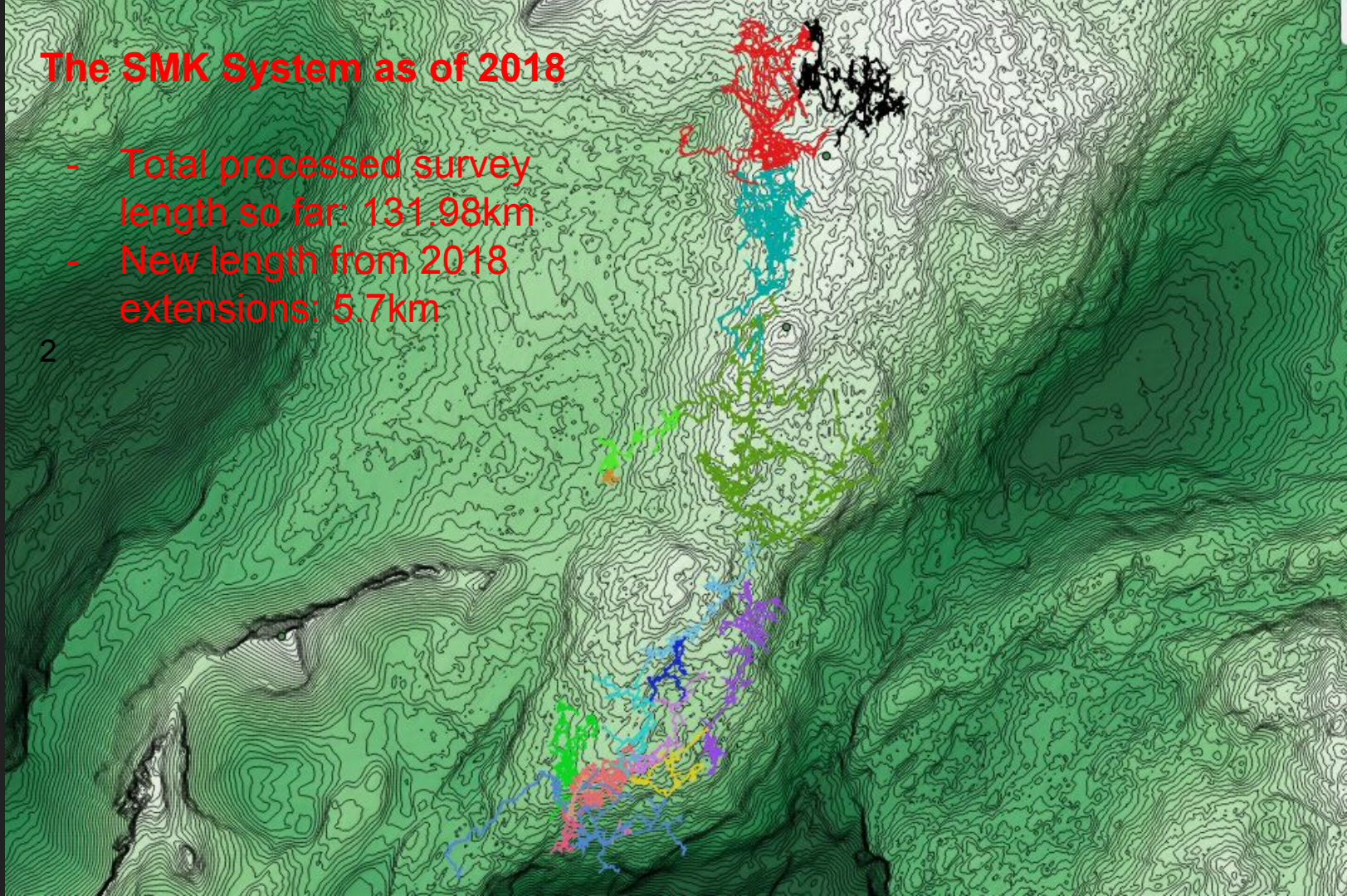




## The SMK System as of 2018

- Total processed survey length so far: 131.98km
- New length from 2018 extensions: 5.7km

2



## Legend

### Centreline Data

#### Unconnected Entrances

- Fischt Gesicht Höhle
- Glücklich Schmetterlinger Höhle
- Heimkommen Höhle

#### SMK System

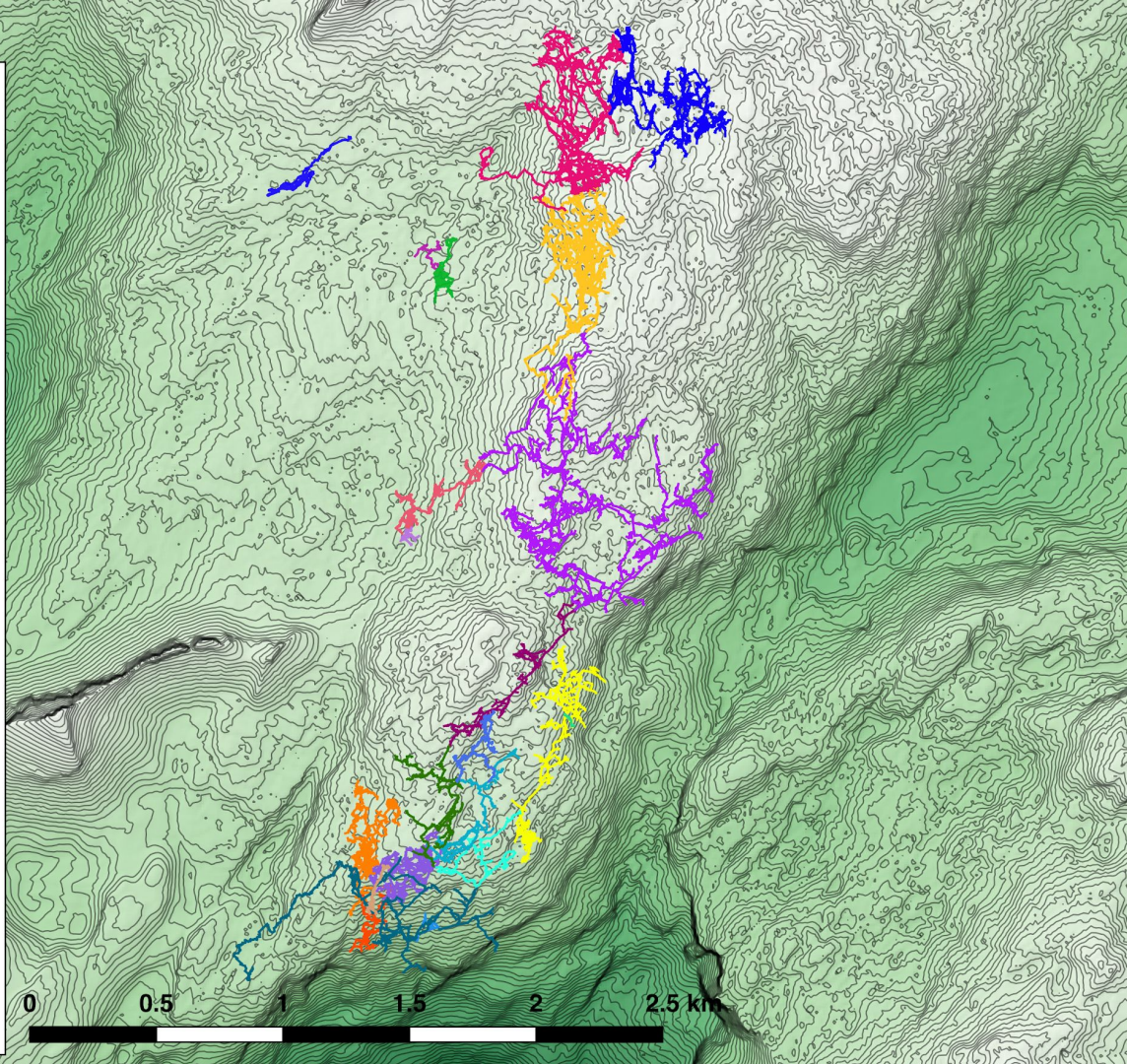
- 264 - Balkonhöhle
- 258 - Tunnockschacht
- 204 - Steinbrückenhöhle
- 161 - Kaninchenhöhle
- 107 - Gemsehöhle
- 83
- 136
- 40 - Eishöhle
- 216
- 158
- 144
- 143
- 78
- 88
- 41 - Stellerweghöhle
- 115
- 142
- 32
- 87

#### Terrain

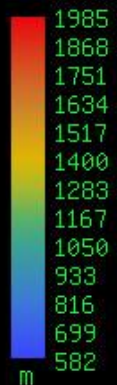
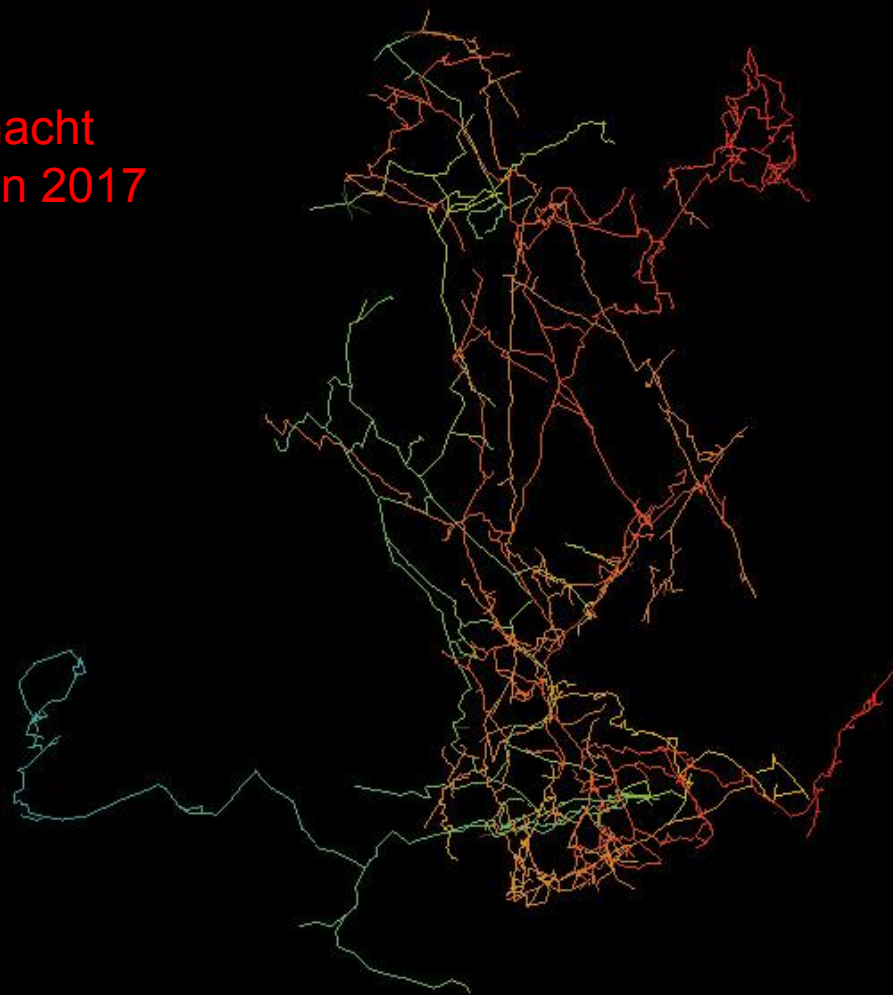
- 10m Contours

#### DTM

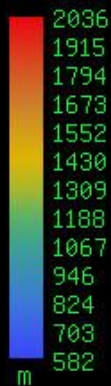
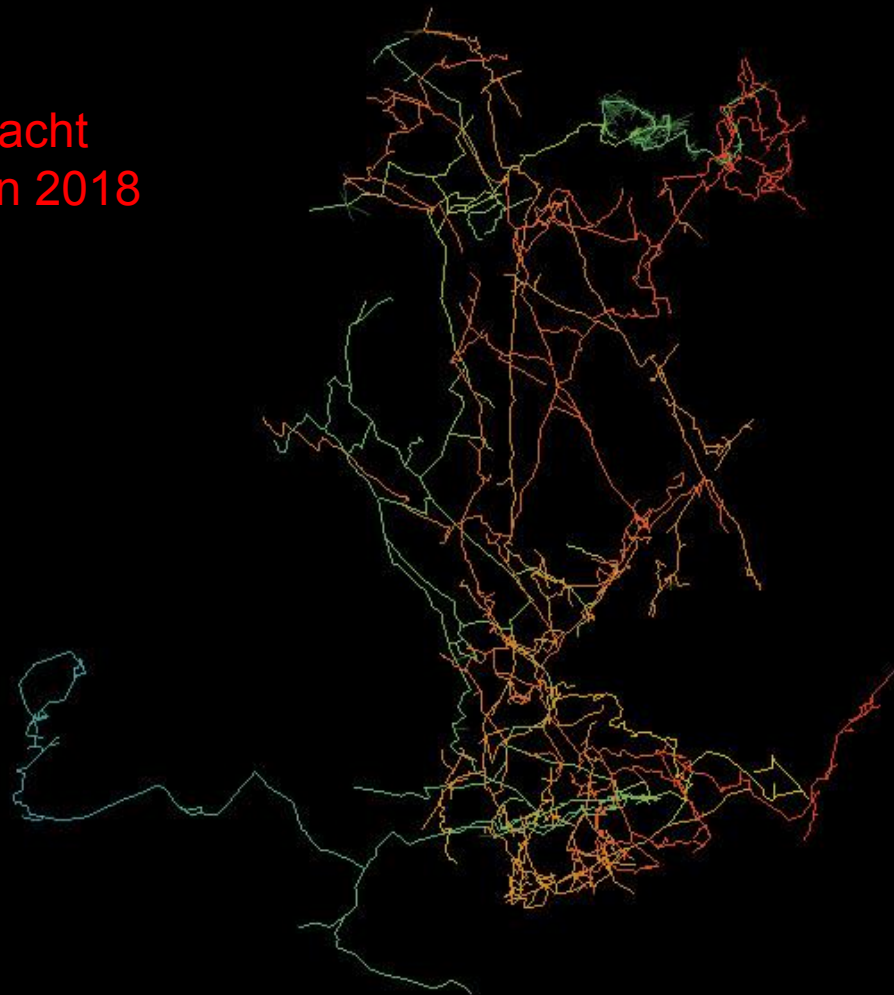
- 942.8
- 1933



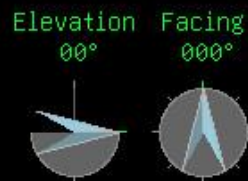
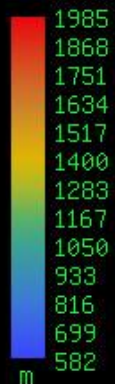
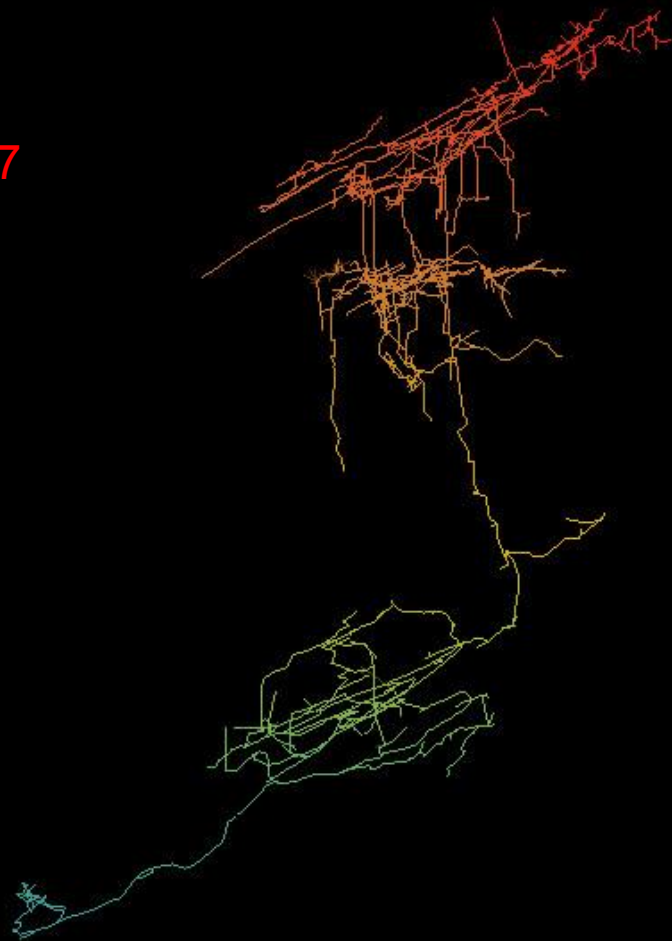
Extent of  
Tunnockschacht  
discovered in 2017  
(plan)



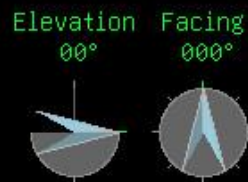
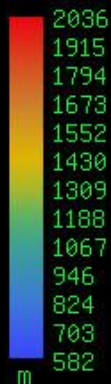
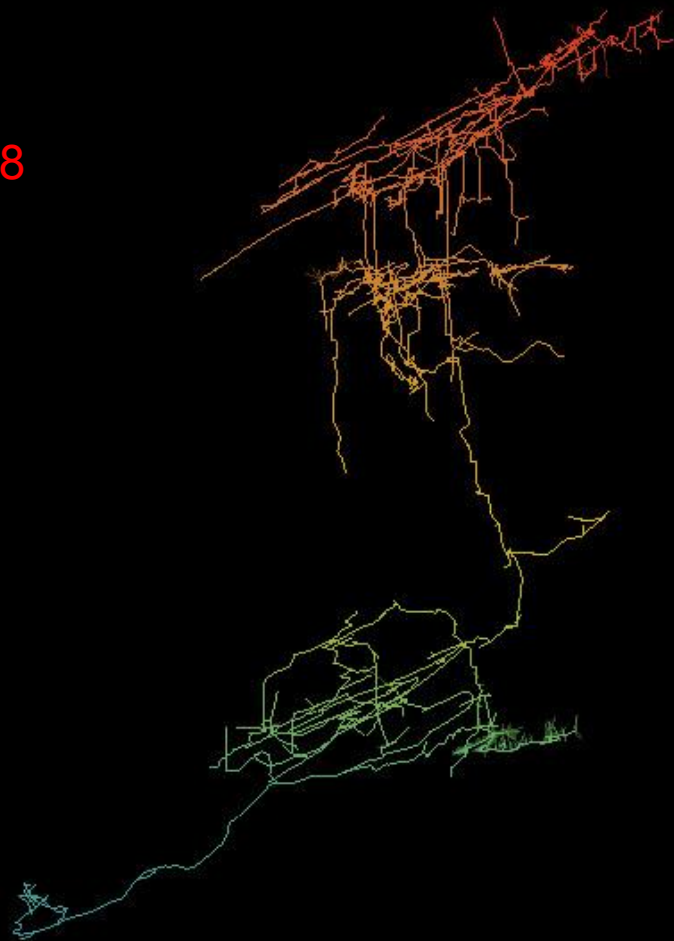
Extent of  
Tunnockschacht  
discovered in 2018  
(plan)



Extent of  
Tunnockschacht  
discovered in 2017  
(elevation)



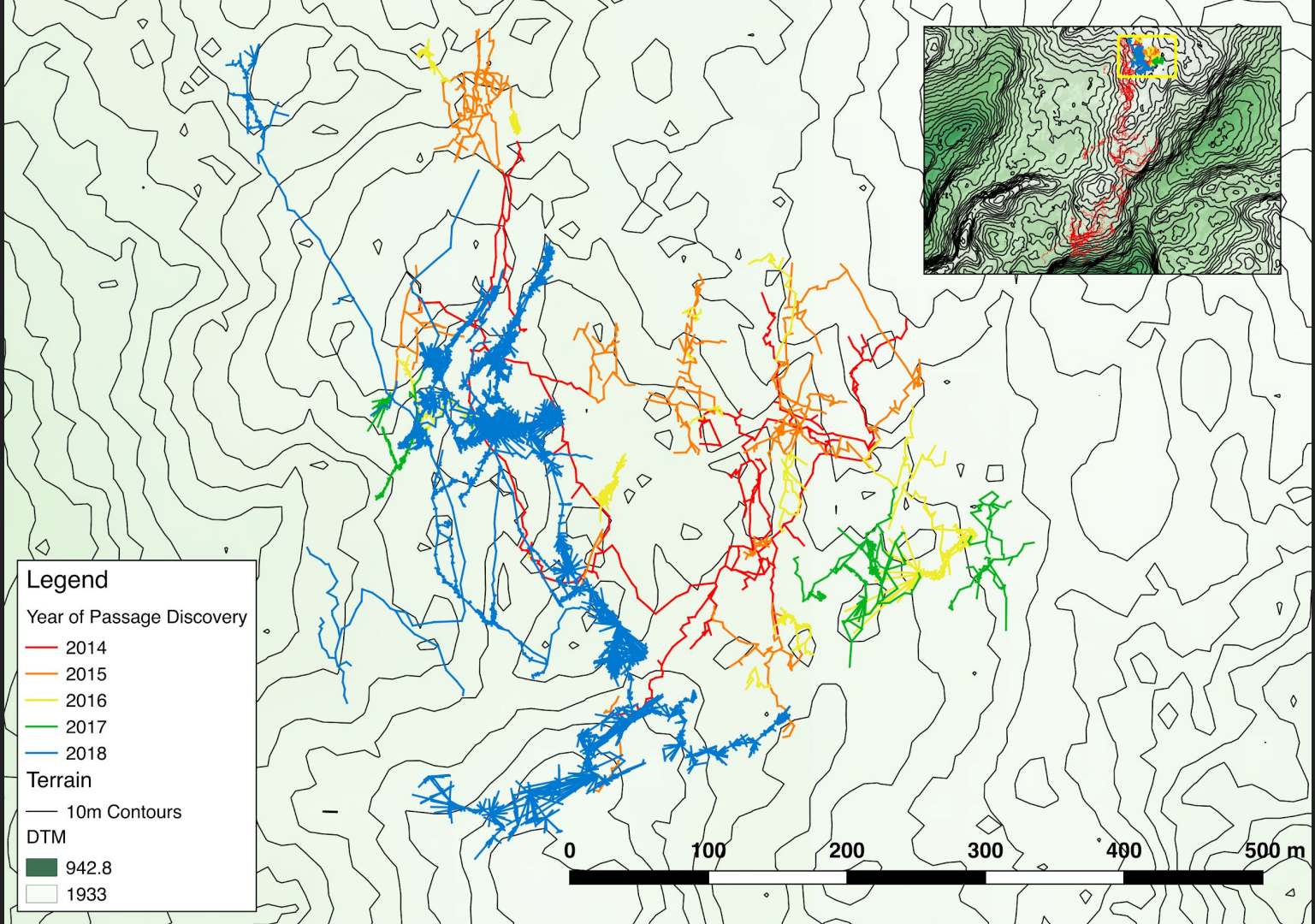
Extent of  
Tunnockschacht  
discovered in 2018  
(elevation)



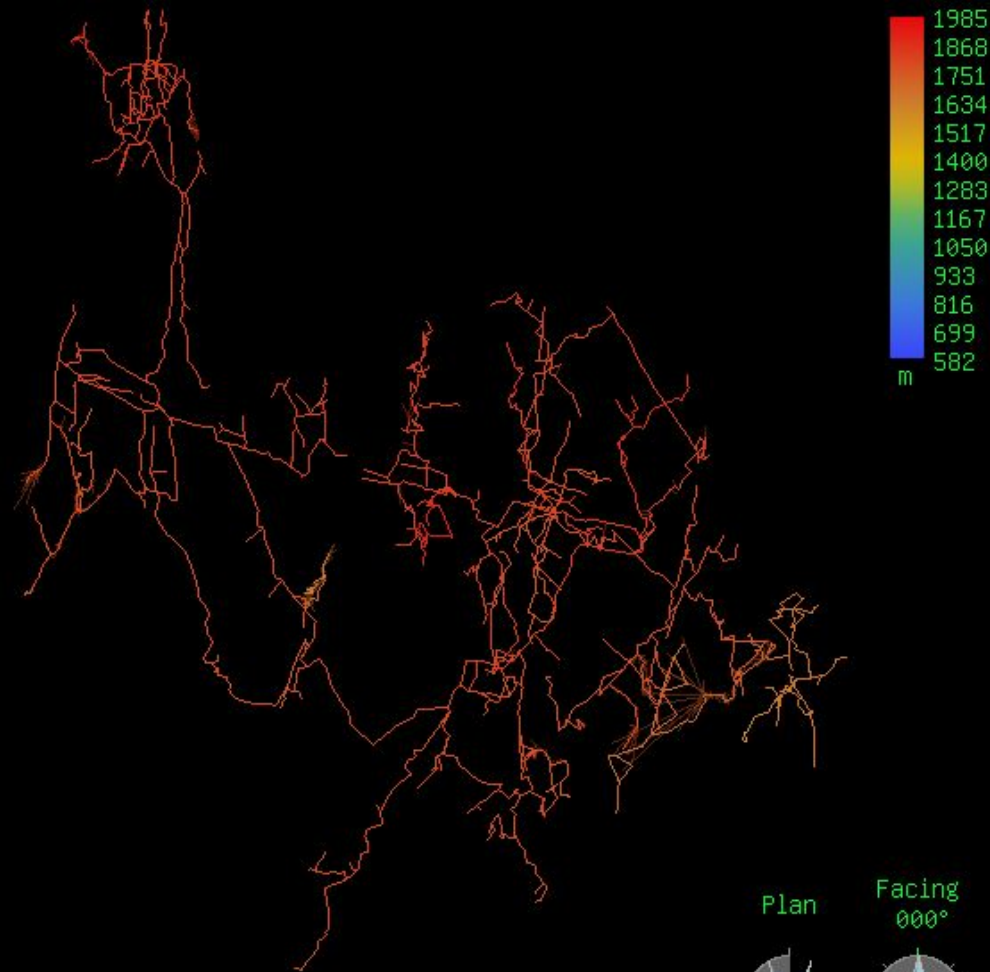




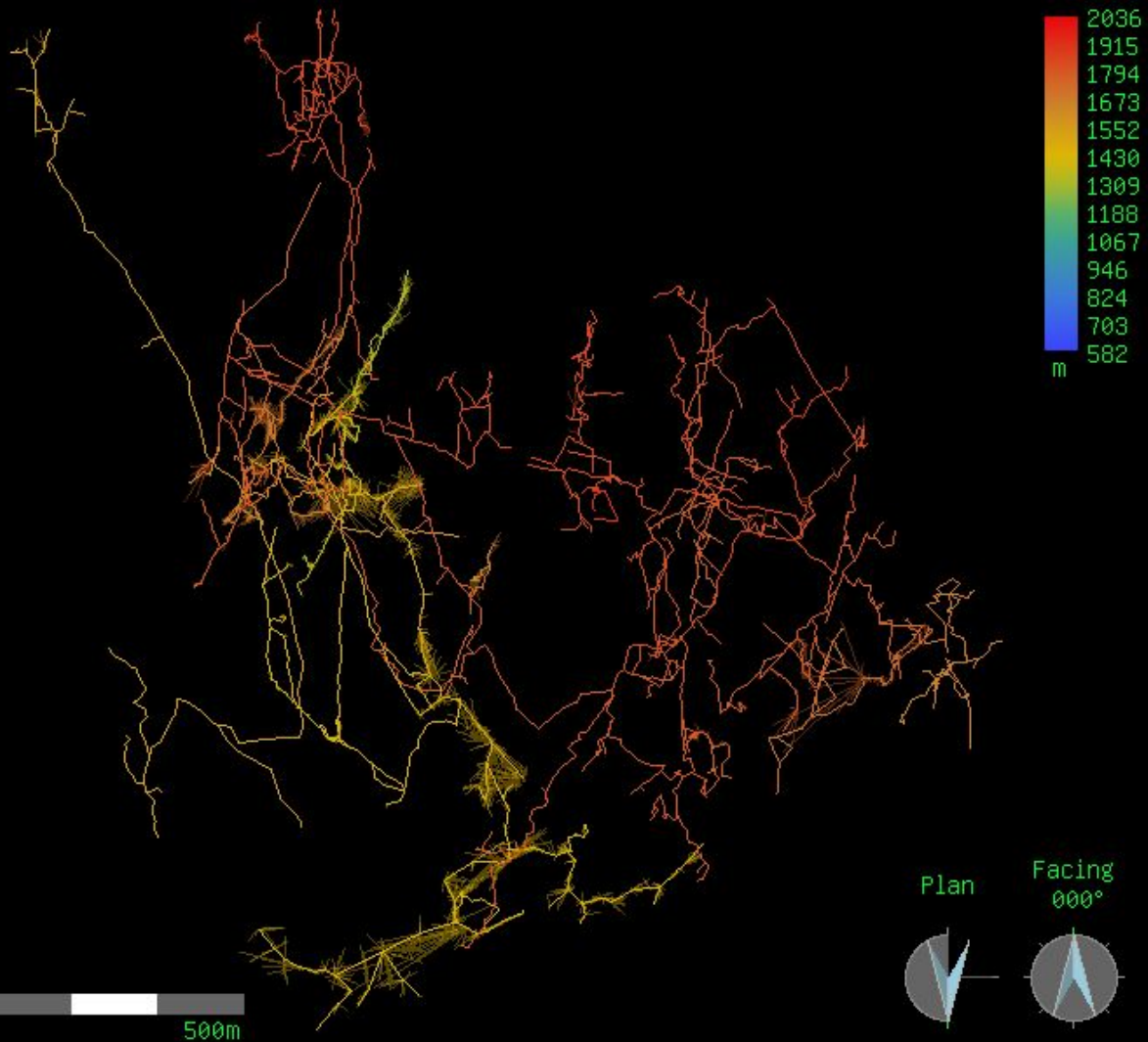




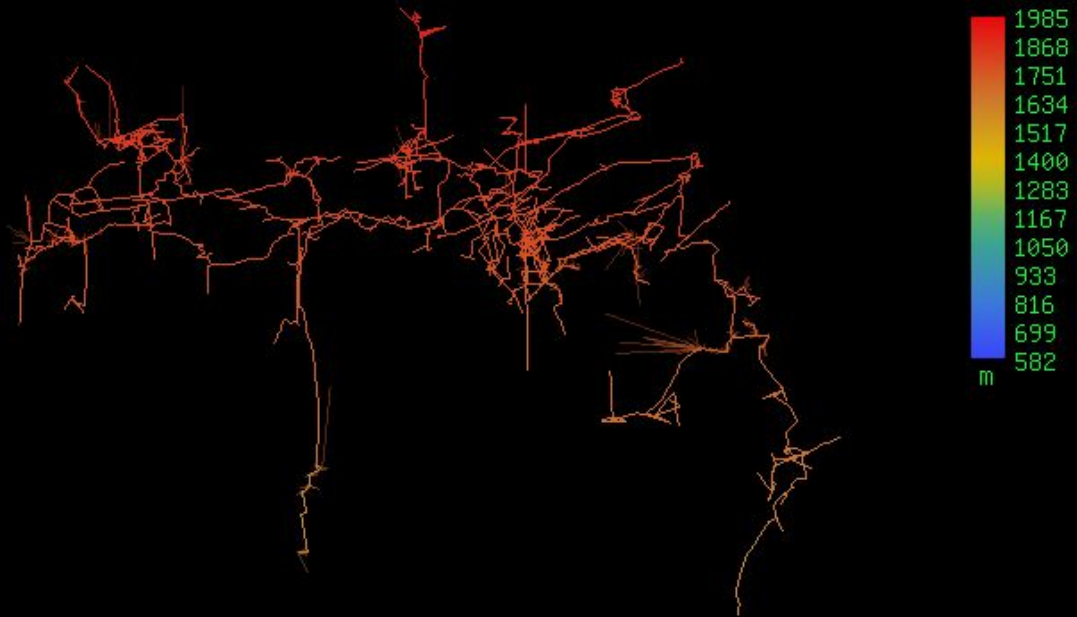
# Extent of Balkonhohle discovered in 2017 (plan)



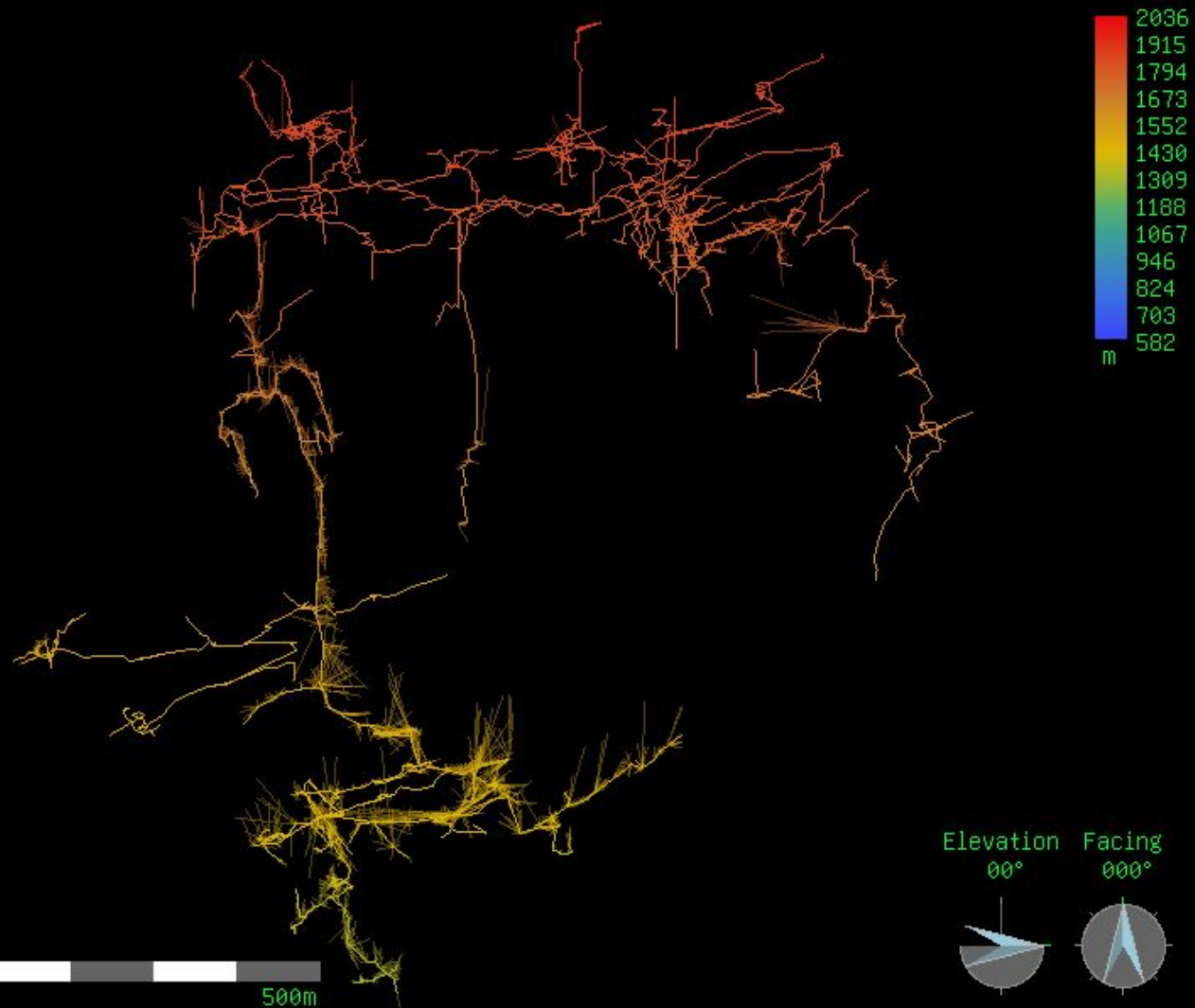
Extent of Balkonhohle  
discovered in 2018  
(plan)



# Extent of Balkonhohle discovered in 2017 (elevation)



Extent of Balkonhohle  
discovered in 2018  
(elevation)







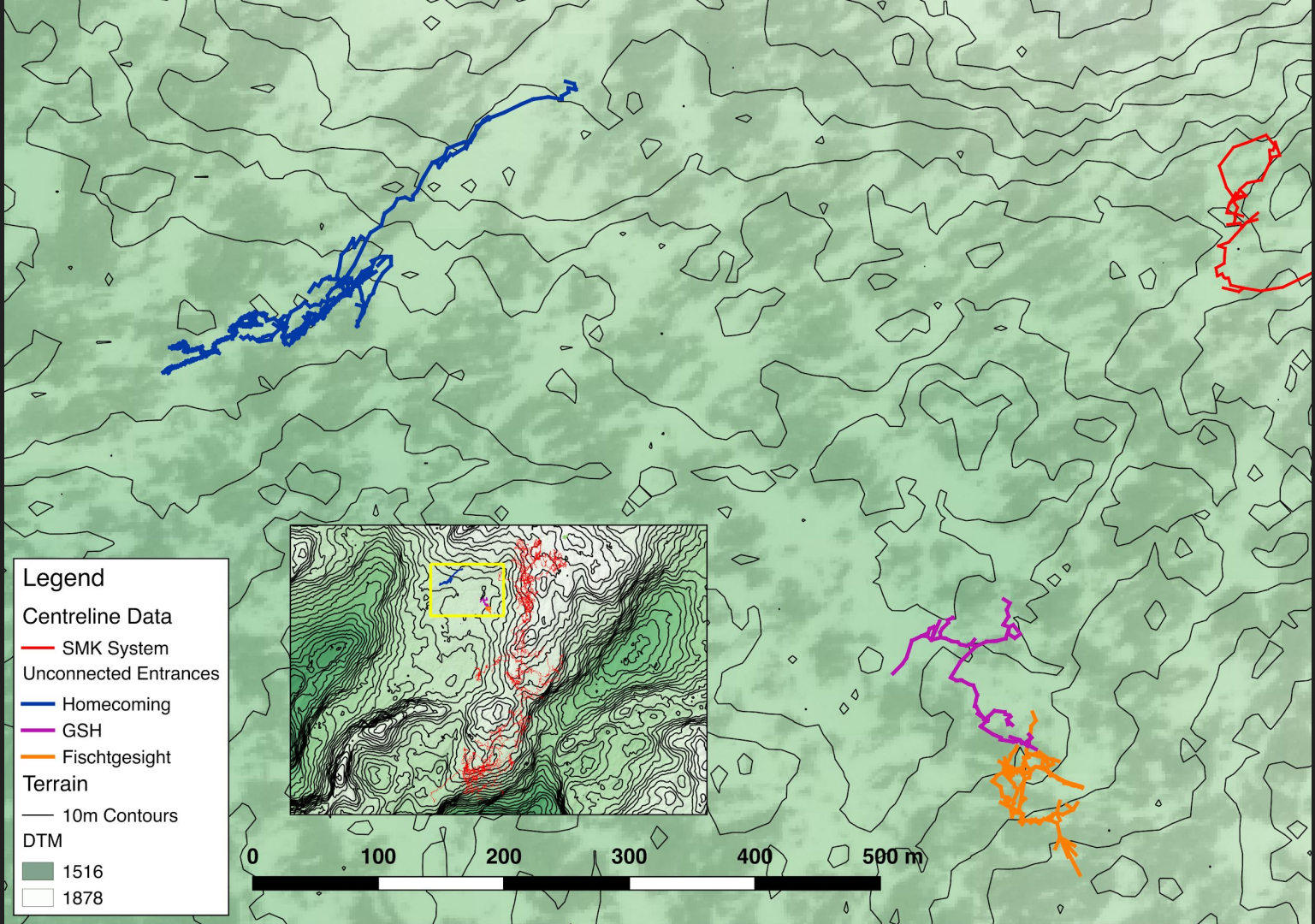












**Legend**

**Centreline Data**

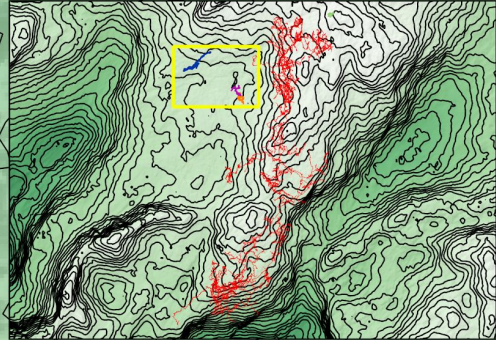
- SMK System
- Unconnected Entrances
- Homecoming
- GSH
- Fischtgesicht

**Terrain**

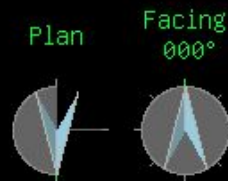
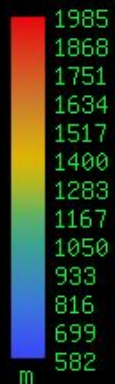
- 10m Contours

**DTM**

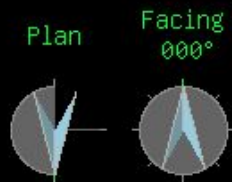
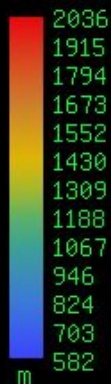
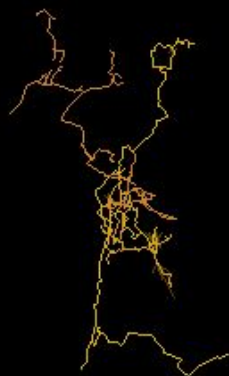
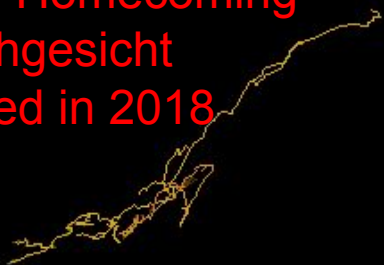
- 1516
- 1878



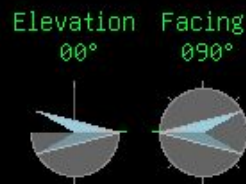
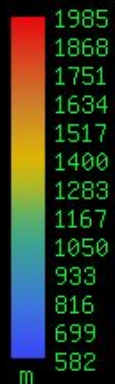
# Extent of Homecoming and Fischgesicht discovered in 2017 (plan)



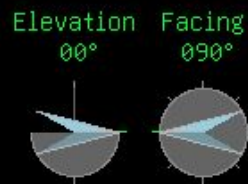
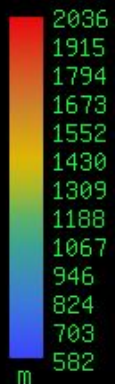
Extent of Homecoming  
and Fischgesicht  
discovered in 2018  
(plan)



# Extent of Homecoming and Fischgesicht discovered in 2017 (elevation)



# Extent of Homecoming and Fischgesicht discovered in 2018 (elevation)







## Homecoming cave





Photo: Rachel Turnbull

## Fishface cave



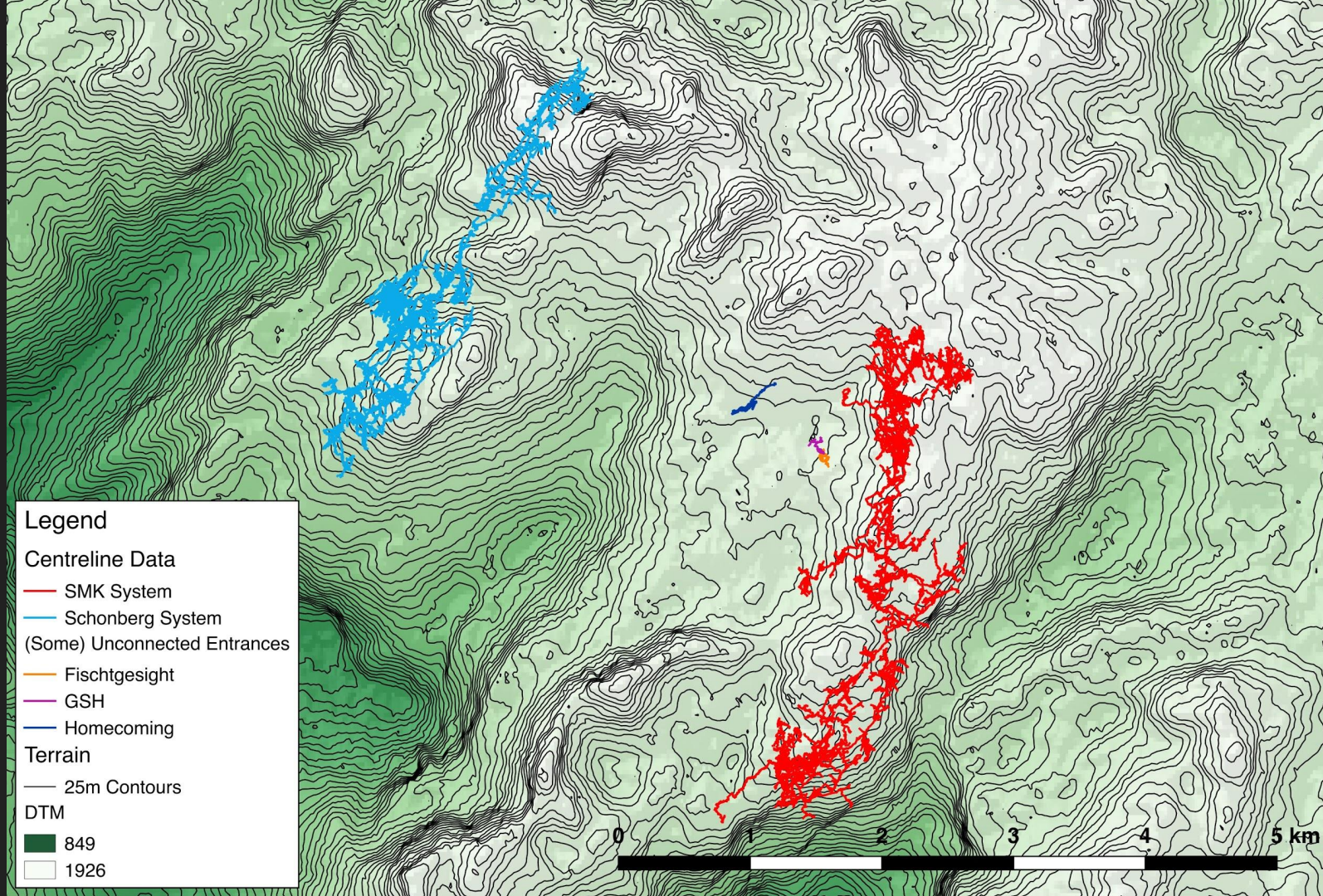














Survivors the morning after the CUCC  
and Arge Grabenstatten barbecue  
night





Thanks to:

Katey Bender, Martin Green and Wookey for assistance in maps and surveys

Haydon Saunders, Tom Crossley, Wookey, Rachel Turnbull, Rob Watson and Nadia Cherradi-Raeburn for help in organising the expedition

Expedition members: Adam Aldridge, Adam Henry, Adelaide de Diesbach, Alex Sterling, Anthony Day, Becka Lawson, Cat Henry, Chris Densham, Christopher Holt, Dickon Morris, Frank Tully, George Breley, Haydon Saunders, Jacob Puhalo-Smith, Jim Blackford, Jon Arne Toft, Julia Day, Lisa Smith, Luke Stangroom, Lydia Leather, Mark Shinwell, Max Weiser, Michael Holliday, Michael Sargent, Mike Butcher, Nadia Cherradi-Raeburn, Natalie Uomini, Olly Hall, Paul Fox, Phil Underwood, Philip Sargent, Philip Withnail, Rachel Turnbull, Radost Waszkiewicz, Ruairidh Macleod, Ryan Boulton, Todd Rye, Tom Crossley, Typhon King and Wookey



UNIVERSITY OF  
CAMBRIDGE



BCRA



The  
**GHAR PARAU FOUNDATION**  
Funding British Cave Exploration and Cave Science



Photo: Ruairiadh Macleod